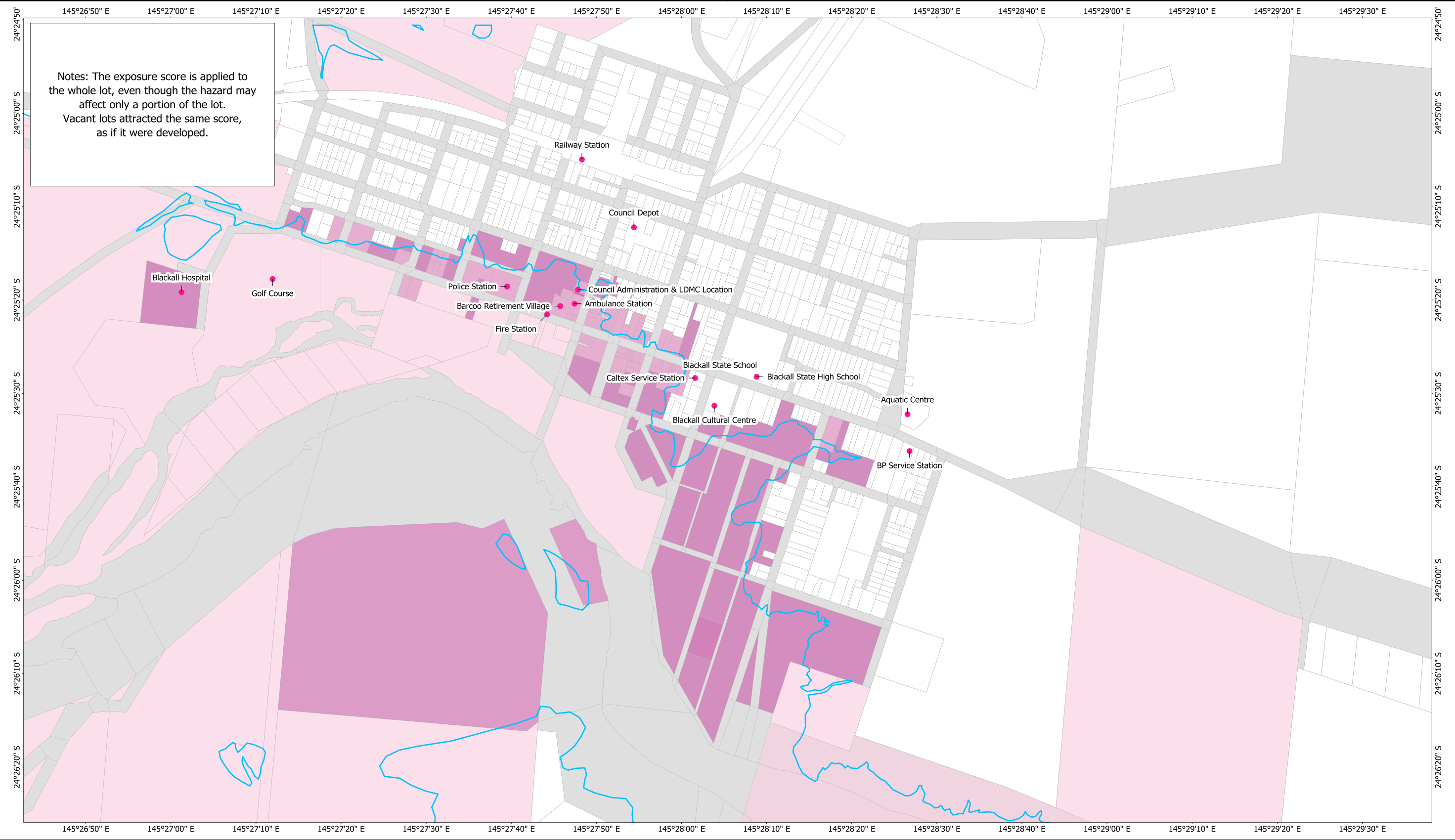
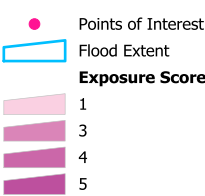


Appendix I

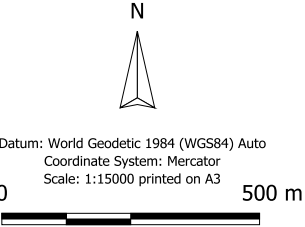
MAP 12 - EXPOSURE EVALUATION FOR 2% (1 IN 50 YEARS)
FLOOD EVENT



Map 12: Exposure Evaluation For 2% AEP (1 in 50 Years) Flood Event



Job: J13_16_Blackall Flood Risk Management Study
Client: DC Solutions & Blackall Tambo Regional Council



This map (the Document) has been prepared by Yarramine Environmental during the course of providing consultancy services to DC Solutions & Blackall Tambo Regional Council. It has been prepared for informational purposes and may not have been prepared for, or be suitable for legal or surveying purposes.

Some information recorded in this Document (the Information) has been provided under license to Yarramine Environmental. Digital Cadastral Data (2013) datasets has been supplied by the Queensland Government (through the Department of Natural Resources and Mines. All other information developed by Yarramine Environmental.

Users of the Information accept all responsibility and risk associated with the use of the Information and should seek independent professional advice in relation to dealings with property.

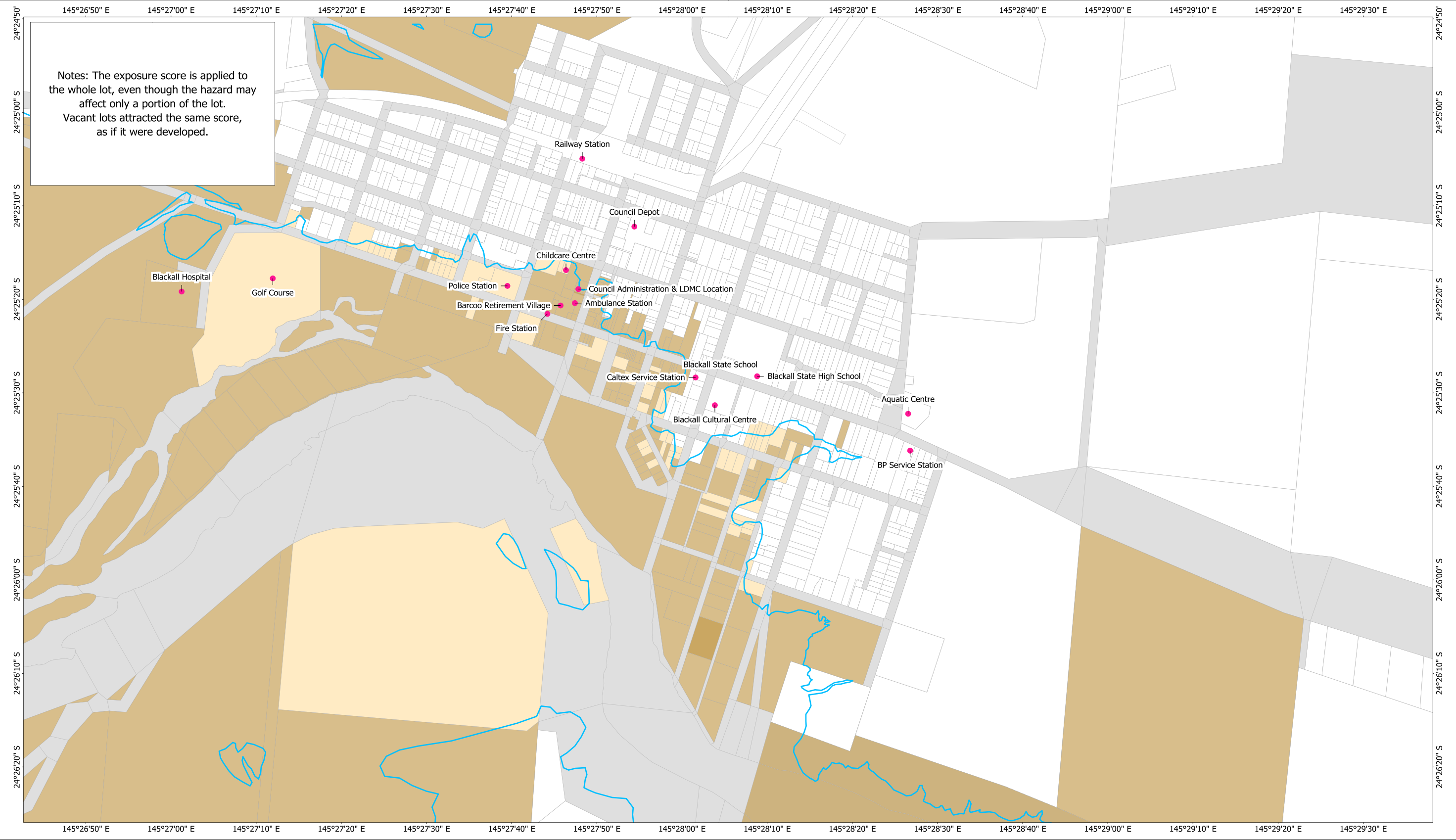
Despite the best efforts of Yarramine Environmental, Yarramine Environmental makes no representation or warranties in relation to the Information, and, to the extent permitted by law, exclude or limit all warranties relating to correctness, positional accuracy, reliability, completeness or currency and all liability for any direct, indirect and consequential costs, losses, damages and expenses incurred in any way (including but not limited to that arising from negligence) in connection with any use of or reliance on the Information.

This Document is not to be on sold or distributed for reward to any third party, used for direct marketing or used in any breach of privacy laws.

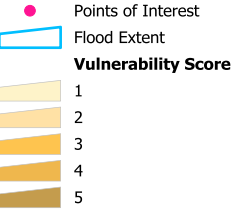
yarramine
environmental

Appendix J

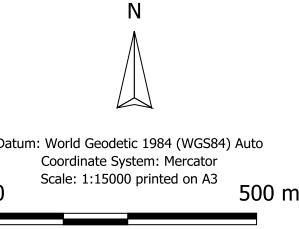
MAP 13 - VULNERABILITY EVALUATION FOR 2% (1 IN 50 YEARS)
FLOOD EVENT



Map 13: Vulnerability Evaluation For 2% AEP (1 in 50 Years) Flood Event



Job: J13_16_Blackall Flood Risk Management Study
Client: DC Solutions & Blackall Tambo Regional Council



This map (the Document) has been prepared by Yarramine Environmental during the course of providing consultancy services to DC Solutions & Blackall Tambo Regional Council. It has been prepared for informational purposes and may not have been prepared for, or be suitable for legal or surveying purposes.

Some information recorded in this Document (the Information) has been provided under license to Yarramine Environmental. Digital Cadastral Data (2013) datasets has been supplied by the Queensland Government (through the Department of Natural Resources and Mines. All other information developed by Yarramine Environmental.

Users of the Information accept all responsibility and risk associated with the use of the Information and should seek independent professional advice in relation to dealings with property.

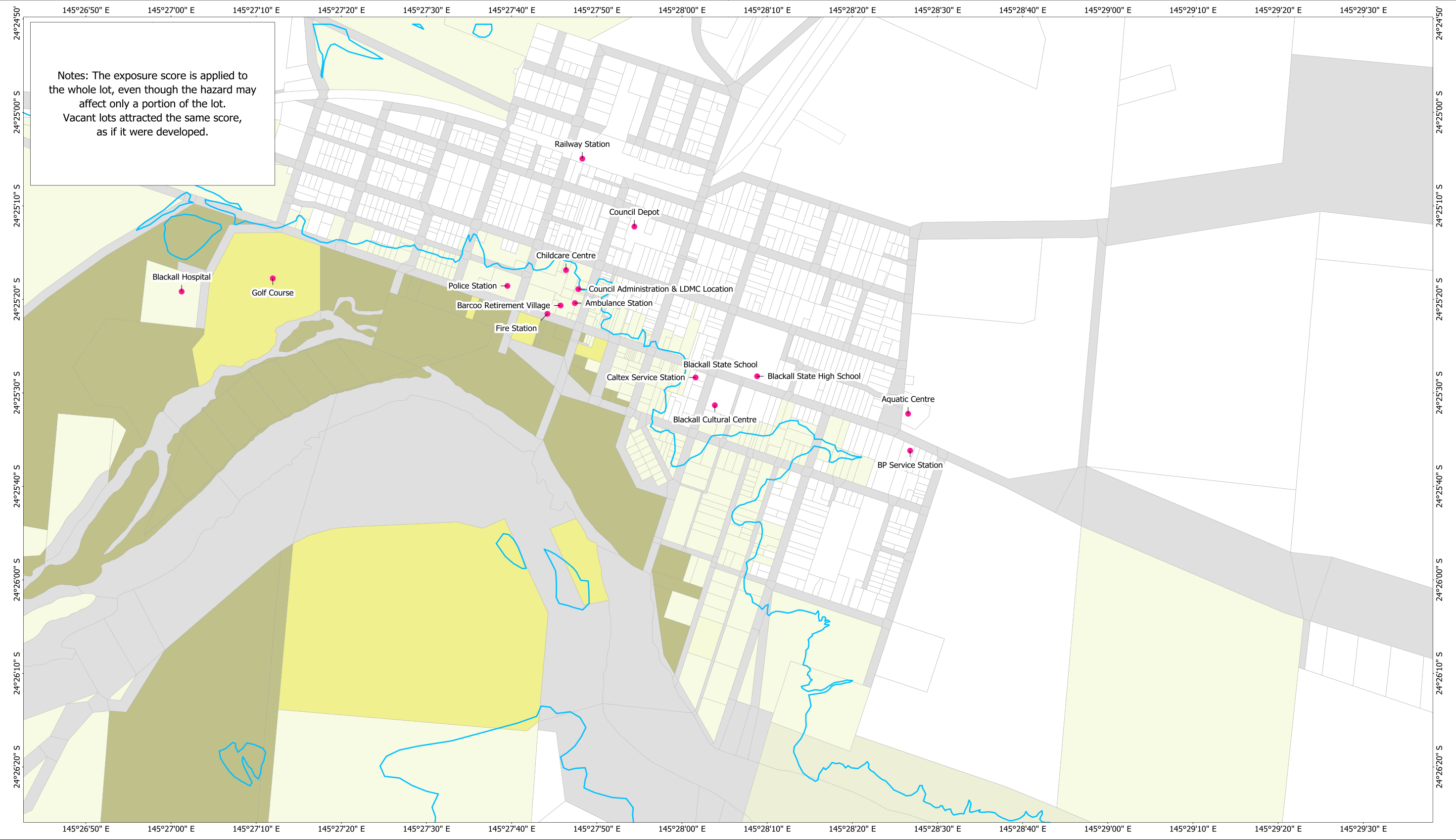
Despite the best efforts of Yarramine Environmental, Yarramine Environmental makes no representation or warranties in relation to the Information, and, to the extent permitted by law, exclude or limit all warranties relating to correctness, positional accuracy, reliability, completeness or currency and all liability for any direct, indirect and consequential costs, losses, damages and expenses incurred in any way (including but not limited to that arising from negligence) in connection with any use of or reliance on the Information.

This Document is not to be on sold or distributed for reward to any third party, used for direct marketing or used in any breach of privacy laws.

yarramine
environmental

Appendix K

MAP 14 - TOLERABILITY EVALUATION FOR 2% (1 IN 50 YEARS) FLOOD EVENT



Notes: The exposure score is applied to the whole lot, even though the hazard may affect only a portion of the lot. Vacant lots attracted the same score, as if it were developed.

Map 14:Tolerability Evaluation For 2% AEP (1 in 50 Years) Flood Event

- Points of Interest
- Flood Extent
- Vulnerability Score
- 2
- 3
- 5

Job: J13_16_Blackall Flood Risk Management Study
Client: DC Solutions & Blackall Tambo Regional Council



Datum: World Geodetic 1984 (WGS84) Auto
Coordinate System: Mercator
Scale: 1:15000 printed on A3
0 500 m

This map (the Document) has been prepared by Yarramine Environmental during the course of providing consultancy services to DC Solutions & Blackall Tambo Regional Council. It has been prepared for informational purposes and may not have been prepared for, or be suitable for legal or surveying purposes.

Some information recorded in this Document (the Information) has been provided under license to Yarramine Environmental. Digital Cadastral Data (2013) datasets has been supplied by the Queensland Government (through the Department of Natural Resources and Mines. All other information developed by Yarramine Environmental.

Users of the Information accept all responsibility and risk associated with the use of the Information and should seek independent professional advice in relation to dealings with property.

Despite the best efforts of Yarramine Environmental, Yarramine Environmental makes no representation or warranties in relation to the Information, and, to the extent permitted by law, exclude or limit all warranties relating to correctness, positional accuracy, reliability, completeness or currency and all liability for any direct, indirect and consequential costs, losses, damages and expenses incurred in any way (including but not limited to that arising from negligence) in connection with any use of or reliance on the Information.

This Document is not to be on sold or distributed for reward to any third party, used for direct marketing or used in any breach of privacy laws.

