



Blackall-Tambo Regional Council

Blackall-Tambo Local Disaster Management Plan

Version 5.3

September 2025

TRADITIONAL ACKNOWLEDGEMENT

Blackall- Tambo Regional Council acknowledges the traditional Country of the Bidjara Peoples. We wish to pay respects to their elders, past, present and emerging and acknowledge the important role Aboriginal and Torres Strait Inlander people continue to play within the Blackall-Tambo Community.

CONTENTS

Introduction.....	4
Foreword.....	4
Part 1 – Administration.....	5
Authority.....	5
Endorsement.....	5
Document Control.....	5
Amendments.....	5
Amendment Register.....	5
Distribution.....	5
Planning Review.....	5
Consultation.....	6
Privacy Statement.....	6
References.....	7
Part 2 – Plan Elements.....	8
Queensland Disaster Management Arrangements.....	8
Scope.....	9
Purpose.....	9
Objectives.....	9
Planning Framework.....	9
Part 3 – Blackall-Tambo Local Disaster Management Group.....	10
Terms of Reference.....	10
Priorities of the Blackall-Tambo LDMG.....	10
Membership.....	10
Chairperson.....	10
Local Disaster Coordinator.....	10
Members.....	10
Advisors.....	11
Support Agencies.....	11
Sub-groups.....	11
Roles and Responsibilities.....	11
Part 4 – Risk Management.....	12
Community Context.....	12
Key vulnerabilities / resiliencies:.....	12
Industry overview:.....	12
Hazard Identification.....	12
Land Use Planning:.....	13
Risk Assessment.....	13
Risk Treatment (Mitigation Strategies).....	13
Hazard Specific Arrangements.....	16
Residual Risk Management.....	17
Part 5 – Preparedness.....	18
Operational Planning.....	18
Agency Roles and Responsibilities.....	18
Community Engagement.....	18
Community Resilience.....	18
Training.....	18
Exercise Management.....	18
Part 6 – Prevention.....	20
Community Education.....	20
Hazard Specific Arrangement.....	20
Pandemic.....	20

<i>Part 7 - Response</i>	21
<i>Disaster Declaration</i>	21
<i>Communication</i>	21
<i>Activation</i>	21
<i>Escalation</i>	21
<i>Local Disaster Coordination Centre</i>	21
<i>Warnings and Alerts</i>	22
<i>Resource Management</i>	22
<i>Council to Council (C2C)</i>	23
<i>Financial Management</i>	23
<i>Disaster Reporting</i>	23
<i>Evacuation</i>	23
<i>Evacuation Centre Management</i>	23
<i>Resupply</i>	24
<i>PART 8 - Recovery</i>	25
<i>Recovery Functions</i>	25
<i>Vulnerable Persons</i>	25
<i>Offers of Assistance</i>	25
<i>Animals in Disasters</i>	25
<i>Spontaneous Volunteers</i>	25
<i>Impact Assessments</i>	25
<i>Appendix 1 – Amendment Register</i>	26
<i>Appendix 2 – Distribution List</i>	27
<i>Appendix 3 – Blackall-Tambo Disaster Management Planning Framework</i>	28
<i>Appendix 4 – Blackall-Tambo Local Disaster Management (LDMG) Terms of Reference</i>	29
<i>Appendix 5 – Blackall-Tambo Disaster Management Risk Register</i>	33
<i>Appendix 6 – Hazardous Material Sites</i>	40
<i>Appendix 7 – Local Agency Disaster Management Role & Responsibilities</i>	43
<i>Appendix 8 – Contact Directory</i>	47
<i>Appendix 9 - Glossary</i>	51
<i>Appendix 10 – Reference List</i>	53
<i>Appendix 11 – Response Organisations (non-public)</i>	54
<i>Appendix 12 – Key Essential Services Information (non-public)</i>	55
<i>Appendix 13 – Additional Information (non-public)</i>	56

Introduction

The Blackall-Tambo Local Disaster Management Plan (LDMP) provides the framework for local disaster management and operations under the Queensland Disaster Management Arrangements (QDMA).

Disaster management planning is focussed on a disaster event which causes serious disruption and impact on a community, whereas an incident causes minimal disruption to the community.

Disaster planning has two components and they provide guidance on:

- **Disaster Management** which comprises arrangements about managing the potential adverse effects of an event.
- **Disaster Operations** which are activities, undertaken before, during and after an event to help reduce loss of life, illness or injury, property loss or damage and environmental damage.

Foreword

Blackall-Tambo Regional Council has an active disaster management philosophy which embraces mitigation, prevention, preparedness, response and recovery strategies.

The Blackall and Tambo communities know well the effects that a natural disaster can have on people, infrastructure and business. In recent years, major floods have been seen across the region which has seen the community strengthen and work together and as a result, recovery efforts have been successful.

The Blackall-Tambo Local Disaster Management Group (LDMG) aims to assist the Blackall and Tambo communities by providing the information and plans to mitigate against adverse effects of a disaster and to co-ordinate an effective response and recovery.

This plan and its associated sub-plans document the arrangements required under the Queensland Disaster Management Act 2003. The Plan takes a risk based and all hazards approach when considering strategies.

Only through collaboration with the community and members of the Blackall-Tambo LDMG from all levels of Government and Non-Government organizations, can disaster management efforts be successful.

Mayor of Blackall-Tambo Regional Council

Chair

Blackall-Tambo Local Disaster Management Group

Part 1 – Administration

The following sections provide the governance and administrative requirements for the Blackall-Tambo LDMP.

Authority

The Blackall-Tambo Local Disaster Management Plan has been prepared by the Blackall-Tambo LDMG and endorsed by the Blackall-Tambo Regional Council pursuant to Section 57 of the *Disaster Management Act 2003* (the Act).

Endorsement

The Blackall-Tambo Local Disaster Management Plan has been prepared by the Blackall-Tambo Local Disaster Management Group pursuant to the *Disaster Management Act 2003* and recommended to the Blackall-Tambo Regional Council for endorsement on 19 September 2025.

The Blackall-Tambo LDMP has been endorsed by the Blackall-Tambo Regional Council at a Council meeting held on 15 October 2025.

Mayor
Blackall-Tambo LDMG
Date:

Local Disaster Coordinator
Blackall-Tambo LDMG
Date:

Document Control

The Blackall-Tambo Local Disaster Management Plan is a controlled document. A public version is available on the Blackall-Tambo Regional Council website with private and confidential information redacted as required.

The LDMP will have a version control number and date of currency and be marked:

1. **Restricted** - complete version for approved use by disaster management stakeholders.
2. **Public** - limited version for access by the public that has confidential information removed.

The public version of the LDMP is available for download from the Council website www.btrc.qld.gov.au. Printed copies of the public version of the LDMP are available at council offices for a service fee.

Copies of the restricted version of the LDMP are available upon written request to the Local Disaster Coordinator or their delegate, the Regional Recovery and Resilience Coordinator.

Version control numbering is listed on the front page of the LDMP and noted at [Appendix 1](#)

Amendments

The controller of the document is the Blackall-Tambo Regional Council Local Disaster Coordinator (LDC). Any proposed amendments to this plan should be forwarded in writing to:

Local Disaster Coordinator (LDC)

Blackall-Tambo Regional Council

PO Box 21

Blackall QLD 4472

PA@btrc.qld.gov.au

Amendment Register

Administrative amendments to the LDMP may be approved by the LDC. Any changes to the intent of the document will be confirmed by the Blackall-Tambo LDMG and recommended to the Blackall-Tambo Regional Council for endorsement.

Amendments to this plan are noted and recorded in the Amendments Register at [Appendix 1](#).

Distribution

The restricted version of the LDMP is distributed according to the Distribution List at [Appendix 2](#).

The public version of the LDMP can be accessed by the community either online or at the Blackall-Tambo Regional Council offices.

Planning Review

The LDMP is a living document and may be amended from time to time in response to the following:

1. Legislative changes
2. Administrative changes

3. *Lessons learned from activations, exercises or training activities*
4. *Hazard and/or Risk changes*
5. *Community context changes*
6. *Participation in external reviews (annual IGEM Plan Assessment)*

The minimum review periods include, but are not limited to:

1. *Amendment because of the above as required*
2. *Administrative review at least annually*
3. *Complete review and rewrite every three years*

Consultation

In preparation of this plan, members of the Blackall-Tambo LDMG were consulted and contributed to its development.

Privacy Statement

*The information contained herein is collected, stored and managed in accordance with the Information Privacy Principles contained in Schedule 3 of the *Information Privacy Act, 2009*.*

References

This Plan and its associated Sub-plans and Guidelines are part of the QDMA made up of but not limited to:

- *Legislation*
- *Plans*
- *Policy*
- *Doctrine*
- *Standard*

For a list of the references utilised in this Plan, refer to [Appendix 9](#).

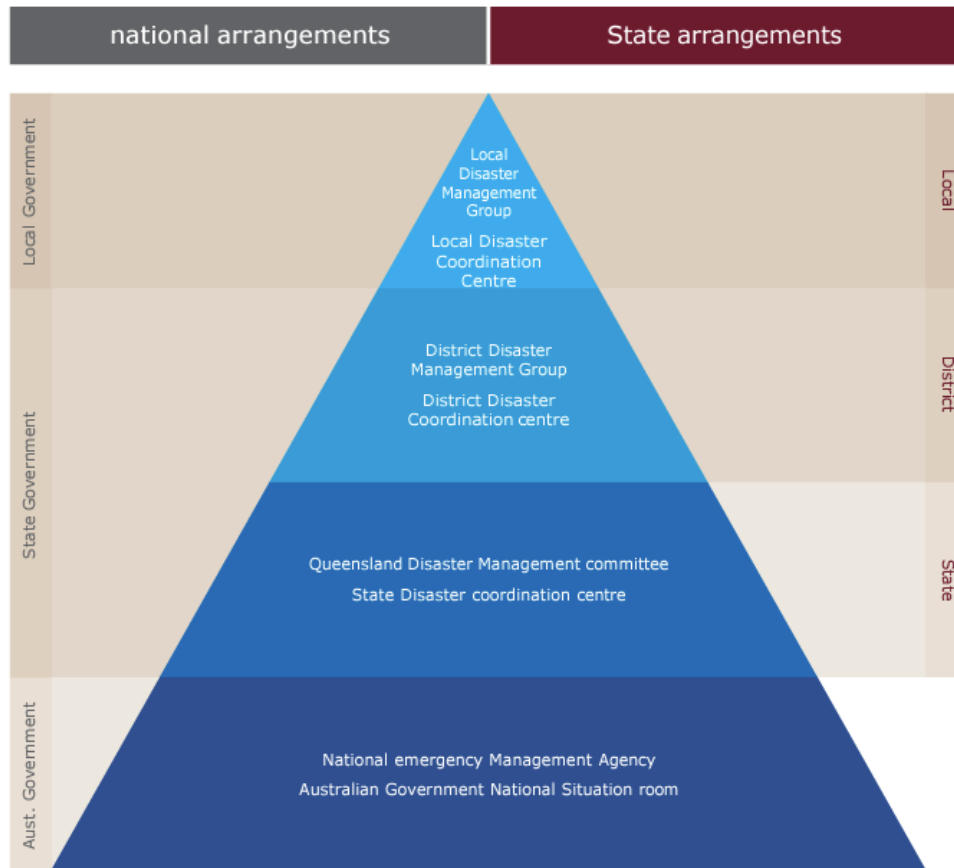
Part 2 – Plan Elements

The Blackall-Tambo LDMP has been produced by the Blackall-Tambo LDMG and endorsed by the Blackall-Tambo Regional Council. The following plan elements underpin the development and review of the LDMP.

Queensland Disaster Management Arrangements

The Blackall-Tambo LDMG forms part of the QDMA that:

- Include local, district and state levels (see diagram below)
- Enable a progressive escalation of support and assistance



Under the *Disaster Management Act 2003*, disaster management in Queensland is based on four principles:

1. A comprehensive approach:
 - Prevention (mitigation)
 - Preparedness
 - Response
 - Recovery
2. An all hazards approach
3. A local disaster management capability
4. Support by the state and district groups to local government

The *Standard for Disaster Management in Queensland* focuses on outcomes and accountabilities of shared responsibilities that include:

- Managing risk
- Planning and plans
- Community engagement
- Capability integration
- Operations
- Collaboration and coordination
- Common language

[Standard for Disaster Management in Queensland 2.1.1.pdf \(igem.qld.gov.au\)](#)

Scope

The scope of the Blackall-Tambo LDMP is bound by the Blackall-Tambo Regional Council local government area and other areas where the LDMP may be activated to support our local communities and disaster management partners.

Purpose

The purpose of the Blackall-Tambo LDMP is to prescribe the local disaster management arrangements to support community safety in times of disaster within the Blackall-Tambo Regional Council local government area.

Objectives

The objectives of the Blackall-Tambo LDMP include:

- 1. Develop local disaster management arrangements for preventing (mitigating), preparing for, responding to and recovering from disasters that impact the community within the Blackall-Tambo Regional Council local government area*
- 2. Identify local resource capacity and capability to support the Blackall-Tambo Regional Council, disaster management stakeholders and community in a disaster event*
- 3. Develop local capacity and capability to support disaster management operations*
- 4. Support local community recovery*

Planning Framework

These arrangements are developed under the Queensland Disaster Management Arrangements (QDMA).

*For a complete listing of local Plans, Sub-plans and Guidelines that support the Blackall-Tambo LDMP, refer to **Appendix 3**.*

Part 3 – Blackall-Tambo Local Disaster Management Group

The Blackall-Tambo Regional Council (BTRC) established a LDMG pursuant to Sections 29, 34 & 35 of the Act to perform its role under the Act and advise Council on disaster management related topics.

Terms of Reference

For the Blackall-Tambo LDMG to function, it requires Terms of Reference (ToR), which are detailed at **Appendix 4 Terms of Reference**. The ToR provides governance to the LDMG on its functions and obligations.

The Terms of Reference are reviewed annually or as required in line with any legislative or policy change.

Priorities of the Blackall-Tambo LDMG

The priorities of the Blackall-Tambo LDMG are set by the group annually based on the QDMA and local need. The current set of priorities are listed at **Appendix 4 Terms of Reference**.

Membership

Members of the Blackall-Tambo LDMG have been appointed by the chairperson pursuant to Regulation 9 of the *Disaster Management Regulations 2014* (the Regulations). Membership is further described in **Appendix 4 Terms of Reference**.

A guideline for members on Local Disaster Management Groups including templates to nominate new members can be found here: [M.1.030 Local Disaster Management Group \(LDMG\) Responsibilities Manual](#)

The chairperson in appointing members, has selected representatives from agencies representing the Blackall-Tambo Regional Council local government area who:

1. Have a key role in responding to disaster or emergency situations
2. Have required qualifications and experience
3. Manage key assets
4. Provide essential community services
5. Can provide liaison officers to ensure succession planning

Chairperson

The Blackall-Tambo Regional Council has appointed the Mayor as the Chairperson and a Councillor as the Deputy Chairperson of the LDMG. The Chairperson and Deputy Chairperson do not have voting rights.

The Chairperson has the following functions (S.34A of the Act):

- Manage and coordinate the business of the group
- Ensure, as far as practicable, that the group performs its functions
- Report regularly to the relevant district group, and the Chief Executive of the department, about the performance by the local group of its functions

The Deputy Chairperson will provide assistance to the Chairperson and will relieve as Chairperson as required.

Local Disaster Coordinator

In accordance with section 35 of the Disaster Management Act 2003, the Chairperson of the Blackall-Tambo LDMG has consulted and appointed the Chief Executive Officer of Council as the LDC. The LDC has voting rights.

The LDC has the following functions (S.36 of the Act):

- Coordinate disaster operations for the LDMG
- Report regularly to the LDMG about disaster operations
- Ensure, as far as practicable, that any strategic decisions of the LDMG about disaster operations are implemented

Members

The membership of the LDMG will be made up of members who have voting rights. This membership will be reviewed annually by the Chairperson, the LDC and the Longreach District Disaster Coordinator (DDC).

The Commissioner of the Queensland Police Service (QPS) will be advised of the membership of the group and any changes pursuant to Section 37 of the Act.

Council members of the LDMG, who form the Blackall-Tambo Regional Council Disaster Management Team (who have voting rights), include:

- Director Organisational Performance
- Group Manager Environment, Health and Compliance
- Group Manager Customer and Council Support

Advisors

The Blackall-Tambo LDMG may seek the assistance of individuals or organisations where specialist or community related information is required. These persons sit as advisors to the group. They are non-voting members.

Support Agencies

These are identified agencies or organisations that may be consulted due to their subject matter expertise but are not required to attend meetings regularly. They are invited guests with no voting rights.

Sub-groups

The Blackall-Tambo LDMG may form subgroups in response to a need. The LDMG will provide authority and direction on the tasks they may undertake, the more common being risk management, disaster management planning or recovery. The subgroups may:

- *Determine their own Terms of Reference*
- *Report and advise the LDMG on the subject they are working on according to agreed times*
- *Subgroups may be ongoing or established for a set time*

Roles and Responsibilities

Local roles and responsibilities of disaster management stakeholders align with those contained within the State Disaster Management Plan (SDMP).

A listing of stakeholders who engage with the Blackall-Tambo LDMG can be found at [Appendix 6](#).

Part 4 – Risk Management

The Blackall-Tambo LDMG recognises the importance of risk assessment and the development of risk mitigation strategies based on sound disaster risk management processes. The Blackall-Tambo LDMG is committed to implementing the concepts and principles detailed in the emergency-related risk assessment method consistent with the Australian Standard AS/NZSISO 31000:2018 Risk management – principles and guidelines.

Community Context

Located in the heart of Queensland's outback, Blackall-Tambo Regional Council local government area is approximately 600km west of Gladstone and 900km north-west of Brisbane. The Blackall-Tambo Regional Council local government area is 30 489 square kilometres in size. The region comprises of the two towns of Blackall and Tambo which lie along the historic Barcoo River on the Landsborough Highway (Matilda Highway). Blackall is an attractive, vibrant town with a population of approximately 1100 people. It is a key administrative centre with a strong arts and cultural scene. As the oldest town in Central Western Queensland, Tambo, which sits at the headwaters of five river systems is a jewel in the west with a population of approximately 320.

Bidjara (also known as Bidyara, Pitjara and Peechara) is an Australian Aboriginal language spoken by the Bidjara people. The Bidjara language region includes the towns of Charleville, Augathella and Blackall as well as the properties of Nive Downs and Mount Tabor. Kuungkari (also known as Kungkari and Koonkerri) is a language of Western Queensland. The Kuungkari language region includes the landscape within the local government boundaries of the Longreach region and the Blackall-Tambo region. Gungabula (also known as Kongabula and Khungabula) is an Australian Aboriginal language of the headwaters of the Dawson River in Central Queensland. The language region includes areas within the local government area of the Maranoa region, particularly the towns of Charleville, Augathella and Blackall as well as the Carnarvon Range.

The Blackall-Tambo region has an extensive history of cattle, sheep and wool production. Jackie Howe, Australia's famous shearer, lived and worked in the area. The Blackall Saleyards is an important centre for the sale and spelling of cattle. It is the only saleyards in Queensland that is certified to sell organic cattle and as such attracts buyers and sellers from within and beyond the region. The region's economy has diversified into other industries including cypress pine sawmilling and tourism. Blackall-Tambo is home to the historic Blackall Wool Scour and the Tambo Teddy workshop where hand crafted bears are made. There are regular passenger flights three times per week connecting Blackall Airport with Longreach and Brisbane.

The region provides a range of youth, seniors and family services and programs. Quality facilities are available to support our many community organisations to provide a wide range of sport and recreation activities including horse racing, bowls, tennis, rugby league, swimming and equestrian. The region's strong volunteer base has been and continues to play an important part in the life of both communities and reflects the high level of community spirit that exists across the region.

The region of Blackall-Tambo can be accessed by road or aeroplane.

Key vulnerabilities / resiliencies:

- *Blackall and Tambo have a significant visitor/tourist population at different times of the year. This brings important financial support to the towns but few of these tourists are aware of the disaster potential in the areas they are visiting or travelling through;*
- *Blackall and Tambo have considerable latent capacity to support themselves and isolated properties during most disaster events;*
- *Rural properties are subject to extended periods of isolation by road;*
- *Blackall and Tambo have populations with a strong sense of community. People are generally well-known to each other which raises inherent resilience factors for these communities; and*
- *Most residents on remote properties are aware of their unique risks and make seasonal preparations for reasonably predictable events.*

Industry overview:

The economy of the Blackall-Tambo region is based on rural agricultural enterprises, light industry, professional service sector (including government, health, education and finance) and tourism. Council places considerable emphasis on maintaining current industry and growing economic opportunities for the area.

Industries include grazing, saleyards, tourism, showgrounds, livestock and wild game harvesting.

Hazard Identification

Whilst all hazards were considered in the development of this Plan, hazards that have been identified below are those with a reasonably foreseeable chance of impacting on the area, or those with historical data to support considerations:

- *Flooding – most of the BTRC region has a long history of flood events with potential to cause anything from mild disruption to serious damage to property, environment and economy;*
- *Severe Storms – the BTRC region is subject to seasonal storm periods that can often include damaging winds, hail or torrential rain;*
- *Transport Incidents (Motor Vehicle) – vehicle accidents have occurred in the BTRC region. These have included accidents with other vehicles, animals and property assets and have resulted in the loss of lives (usually controlled entirely by QPS);*
- *Transport Incidents (Heavy Motor Vehicle) – heavy vehicle accidents have occurred in the BTRC region. These have included Hazmat incidents and have resulted in the loss of lives. There are particular concerns regarding*

the potential for these incidents in the residential areas near the highways (usually controlled entirely by QPS and QFD);

- *Transport Incidents (Aircraft) – regular scheduled domestic flights, charter and private aircraft use the Blackall airport. The Tambo airstrip is used for charter or private aircraft and is an all-weather strip;*
- *Urban Fires – each town within the BTRC area has had urban fire events. They have been recorded at various times of the year and are not seasonal;*
- *Bushfires – rural fires affecting property and grazing areas occur from time to time during the dry season;*
- *Water Supply Contamination – domestic water services in all towns are subject to potential contamination by natural, accidental or malicious events;*
- *Animal and Plant Disease – diseases of animals and plants affecting production, safety for consumption or livestock. There have been historical events of animal disease outbreaks affecting both domestic and wild animals;*
- *Terrorist Attack – on public infrastructure, multiple casualties and potentially main thoroughfares blocked by the incident;*
- *Pandemics – pandemics are highly contagious viruses that are easily spread and can cause severe illness and even loss of life. This includes Covid-19 which is a pandemic that is long-lasting and has caused widespread disruption, concern and uncertainty in the community.*

Land Use Planning:

Whilst cognisant of some Local Government incentive programs that support land use policies generally targeting nature conservation efforts, Blackall-Tambo Regional Council has not initiated any such programs and has not indicated an eagerness to engage in this arena in the near future.

Risk Assessment

The Blackall-Tambo LDMG undertook a risk management process aligned to the Risk Management Standard ISO 31000:2018. The Risk Register and matrix along with the listings of Critical Infrastructure and Essential Services can be found at [Appendix 5 Risk Register](#).

Risk Treatment (Mitigation Strategies)

The LDMG is committed to identifying risk treatment including mitigation works, preparations for response and management of residual risks within their area of responsibility. Blackall-Tambo Regional Council will seek to make appropriately responsible allocations to approved mitigation works.

The LDMG will identify responsible agencies and lobby for mitigation activities, response preparations and management of residual risks that are outside the area of responsibility of Blackall-Tambo Regional Council, but where non-action is likely to result in an adverse impact on the community of BTRC.

It is recognised that limited options to physically mitigate against natural hazards exist in the Blackall-Tambo Regional Council local government area. Most of the risk treatments will therefore be identified to prepare the community, local disaster management system, Council, other agencies and linkages to support agencies for response, recovery and management of residual risks. Council uses Get Ready Queensland funding and seeks funding from the Queensland Resilience and Risk Reduction Fund (QRRRF) and the National Emergency Management Agency (NEMA) to mitigate risk.

Mitigation Strategies

Risk	Treatment Strategy	Priority	Responsible (Agency)	Consequential Actions	Implementation (Timeframe)	Performance Measures (Reporting, Monitoring)
Flooding	Monitoring upstream water flows to enable preparedness for warning of upcoming events and advising of severity	High	BTRC BOM	This monitoring will provide up to date information to residents to assist them to prepare for a flood event.	Regularly during and after rainfall events	Reports to Council
Severe weather	Cleaning backyards, removing rubbish/debris. Removing trees near power lines.	Medium	BTRC Ergon	These actions remove the risk of injury or further damage from flying articles or trees falling on power lines.	Annual	Reports to Council
Bushfire	Reducing fuel load on Landsborough Highway and local roads	High	BTRC DTMR QFD	These actions reduce the risk of bushfires crossing the Highway and local roads	Regularly after rainfall events	Reports to Council
Drought	Provide psychological assistance to drought affected members of the Shire	High	BTRC Queensland Health Mental health providers WQ Drought Committee	BTRC to provide assistance as requested from agencies	Ongoing	Reports to Council
Heatwave	Ensure that Council swimming pools and libraries are available during times of extreme heat to provide relief	Medium	BTRC BOM Queensland Health	BTRC to provide assistance to Queensland Health as requested	During a declared heatwave event	Reports to Council

<i>Risk</i>	<i>Treatment Strategy</i>	<i>Priority</i>	<i>Responsible (Agency)</i>	<i>Consequential Actions</i>	<i>Implementation (Timeframe)</i>	<i>Performance Measures (Reporting, Monitoring)</i>
<i>Vector Outbreak</i>	<i>Council to undertake year round monitoring for vector outbreak</i>	<i>Medium</i>	<i>BTRC DAF</i>	<i>BTRC to monitor mosquito levels around suspect areas and undertake periodic treatment in these areas and provide public health notices. DAF to monitor locust and grasshopper infestations.</i>	<i>Ongoing</i>	<i>Reports to Council</i>
<i>Pandemic</i>	<i>Council will support a public health vaccination program</i>	<i>Medium</i>	<i>Queensland Health</i>	<i>BTRC to provide facilities where public health vaccination programs can be conducted.</i>	<i>As required</i>	<i>Reports to Council</i>
<i>Vulnerable Persons</i>	<i>Council investigates with the Blackall Hospital and Longreach District Health Services a "Vulnerable Persons Register" and "Evacuation Plan".</i>	<i>Medium</i>	<i>Queensland Health Providers of health care for vulnerable persons</i>	<i>Council requests information to be managed by Blackall Hospital DON.</i>	<i>Ongoing</i>	<i>Reports to Council</i>

Hazard Specific Arrangements

A number of incidents will be specifically planned by specialist agencies where expert advice is required. Hazard specific plans address the hazard actions across all prevention, preparedness, response and recovery (PPRR) phases. Those plans include information on how the QDMA links with the hazard specific arrangements and how the Blackall-Tambo LDMG will support the primary agency to manage that event.

Human and/or animal disease epidemics or pandemics have significant potential to impact across the region, especially in smaller towns where resources to identify, treat and care for those affected may be limited.

Agency specific coordination centres may be established in addition to the local, district and State coordination centres. Internal procedures including the passage of information and resources may be managed using different processes. Where this occurs, the primary agency will inform the State Disaster Coordination Centre (SDCC) and is responsible for ensuring these arrangements are coordinated. Primary agencies have a role in ensuring hazard specific plans link to corresponding national hazard specific plans and arrangements and that appropriate communication and relationships with counterparts at the national level are maintained.

Hazard specific plans include, but are not limited to:

Hazard	Primary Agency	State National Plans
Animal and plant disease	Department of Agriculture & Fisheries	<ul style="list-style-type: none"> ▪ Australian Veterinary Emergency Plan (AUSVETPLAN) ▪ Australian Aquatic Veterinary Emergency Plan (AQUAVETPLAN) ▪ Australian Emergency Plant Pest Response Plan (PLANTPLAN) ▪ Biosecurity Emergency Management – Response Planning Guide
Biological (human related)	Queensland Health	State of Queensland Multi-Agency Response Plan to CBR Incidents (State CBR Plan) (Chemical, Biological and Radiological Incidents)
Bushfire	Rural Fire Service Queensland	<p>Queensland Bushfire Plan QLD Bushfire Plan (disaster.qld.gov.au)</p> <ul style="list-style-type: none"> ▪ Central West Area Fire Management Group Bushfire Risk Mitigation Plan ▪ RFSQ Central Region Bushfire Annex
Chemical	Queensland Fire Department	State of Queensland Multi-Agency Response Plan to CBR Incidents (State CBR Plan) (Chemical, Biological and Radiological Incidents)
Pandemic	Queensland Health	<ul style="list-style-type: none"> ▪ Queensland Health Pandemic Influenza Plan ▪ Australian Health Management Plan for Pandemic Influenza
Radiological	Queensland Health	State of Queensland Multi-Agency Response to CBR Incidents (State CBR Plan) (Chemical, Biological and Radiological Incidents)

Terrorism	Queensland Police Service	<ul style="list-style-type: none"> ▪ Queensland Counter-Terrorism Strategy ▪ National Counter-Terrorism Plan
-----------	---------------------------	--

Residual Risk Management

Residual Risk refers to the level of risk remaining after implementation of a risk treatment.

The Blackall-Tambo LDMG is not directly responsible for the management of residual risk that is identified as the responsibility of an agency/organisation. Each agency is required to address residual risks in its area of responsibility through the development of its own internal management and planning processes.

The Blackall-Tambo LDMG Chairperson may seek assurance or confirmation that this planning and capacity development has been undertaken by responsible agencies.

For residual risks with no clearly established responsible agency, or where the residual risk is not being appropriately managed, or where the residual risk remains an unacceptable risk to the community, the Blackall-Tambo LDMG should develop mitigation strategies.

Residual risks identified as the responsibility of Council will be communicated to the Blackall-Tambo LDMG and managed by Council through the development of the local response and recovery arrangements and appropriate support activities. Where Councils' capacity to deal with a residual risk that falls within its responsibility, requests for additional assistance may be directed to the Longreach District Disaster Management Group (DDMG).

Part 5 – Preparedness

The Blackall-Tambo Regional Council and its LDMG undertakes preparedness activities throughout the year to promote community safety and resilience. The Blackall-Tambo LDMG does this through a variety of strategies in partnership with its disaster management partners.

Operational Planning

These arrangements are developed under the QDMA. The objectives of the Blackall-Tambo LDMG operational planning arrangements are to:

- Ensure the safety of the community;
- Ensure the provision of appropriate response and/or recovery support to affected communities;
- Facilitate and support the restoration of essential community services and infrastructure;
- Support and locally lead the recovery of the community from the disaster.

A listing of sub-plans, Guidelines and strategies can be found at [Appendix 3](#).

Agency Roles and Responsibilities

Agency roles and responsibilities can be found in detail at [Appendix 6](#). Their listed roles and responsibilities are based on what they are required to provide in support of the Blackall-Tambo LDMG from a Local, District or State level subject to the disaster type. The Blackall-Tambo LDMG supports agency preparedness activities.

Community Engagement

The Blackall-Tambo LDMG seeks to engage with the local community to facilitate a **‘Shared Responsibility’** approach to disaster management.

The Blackall-Tambo LDMG is guided by the **International Association of Public Participation (IAP2)** Spectrum when engaging with the community. The Spectrum provides a level of engagement depending on the outcome and includes:

- Inform
- Consult
- Involve
- Collaborate
- Empower

The way the Blackall-Tambo LDMG communicates with the community and its stakeholders is detailed in the **Communications Sub-plan**.

Community Resilience

The Queensland Strategy for Disaster Resilience is underpinned by four key objectives:

- Queenslanders understand their disaster risk
- Strengthened disaster risk management
- Queenslanders are invested in disaster risk reduction
- There is continuous improvement in disaster preparedness, response and recovery.

The Strategy provides an overarching framework to empower Queenslanders to factor in resilience measures and activities as they anticipate, respond and adapt to changing circumstances.

Further details can be obtained from the Queensland Strategy for Disaster Resilience 2022 - 2027.

Training

Disaster management training is the responsibility of the member agency and the individuals on the Blackall-Tambo LDMG. The Queensland Police Service (QPS) delivers the training through the State Disaster Management Training Framework.

The LDC of the Blackall-Tambo LDMG will liaise with the QPS Emergency Management Coordinator (EMC) for the Longreach Disaster District to identify training needs and deliver training to LDMG members and others to build capacity and capability to undertake their responsibilities in disaster management.

For further support, the contact details for the QPS EMC are listed in the Contact Directory at [Appendix 8](#).

Exercise Management

Developing an exercise management program has the benefit of:

- training personnel
- reviewing plans
- testing the effectiveness of plans and resources

The exercise format can be one or a combination of the following:

- *Discussion – hypothetical – agency presentation*
- *Desk-top*
- *Functional*
- *Field*

An exercise management program to review the local disaster management arrangements will be determined by the Blackall-Tambo LDMG or Subgroup set up for the purpose.

An exercise management program to review the Blackall-Tambo local disaster management arrangements includes, but is not limited to:

- *A need is identified to test a plan or part of a plan from the local disaster management arrangements at least annually and is facilitated by the Blackall-Tambo LDMG*
- *If the local disaster management arrangements have been activated fully at least once in a calendar year, it may be decided not to proceed with the annual exercise*
- *The Blackall-Tambo LDMG participates in neighbouring LDMG or DDMG exercises in a calendar year where the arrangements are activated, then the annual exercise may not be required.*

The LDC will seek the assistance of the QPS EMC to assist in facilitating the exercise management program along with the Regional Recovery and Resilience Coordinator (RRRC) and the Executive Officer (XO) of the Longreach DDMG.

Part 6 – Prevention

The Blackall-Tambo Regional Council and its LDMG identify hazards and potential mitigation strategies to implement that will alleviate the consequences of a disaster on the community.

Community Education

The Blackall-Tambo Regional Council and its LDMG contributes to the resilience of their community through community education by the supply of relevant disaster management information, specific hazard/risk management tools for the community and hazard/risk awareness activities, including:

- *Regular disaster management information as part of the council newsletter to residents;*
- *Signage of known risks (where appropriate) to ensure greater community awareness;*
- *Specific disaster management news, information, tools or resources through council service centres, rates notices and other community resources;*
- *Preparing information sheets for public distribution on hazards;*
- *Notifying residents of preparedness for extreme hazards via varied media tools;*
- *Preparing procedures and guidelines for the public on communication methods to be adopted before, during and post disasters;*
- *Connecting to the community via multi-media (i.e. Website and Facebook);*
- *Newsletters to each community prior to storm season and distributed on Facebook;*
- *Distribute information from Get Ready website as reminders to communities;*
- *Community information sessions for pre-season awareness;*
- *Distribution of Be Ready Central West Flip Books www.btrc.qld.gov.au/downloads/file/928/be-ready-central-west*
- *Up-to-date information on Council's disaster dashboard www.rapad.qitplus.com/blackall-tambo*

Further details on how community education may be facilitated is found in the Blackall-Tambo Regional Council Communication Policies.

Hazard Specific Arrangement

The Blackall-Tambo LDMG through its risk management process may identify a need or collaborate with a hazard management agency to develop a local hazard specific plan.

The LDMG has developed local hazard specific plans for:

Pandemic

*The Blackall-Tambo LDMG worked with Queensland Health and Queensland Police to develop a local Pandemic Sub-plan. Refer to **Pandemic Sub-plan**.*

Part 7 - Response

During a disaster, Council provides initial support to the affected community until its resources are fully committed. Additional support from the state, and ultimately the Commonwealth Government may be requested if needed. In accordance with section 4A(c) of the Act, Local Government is the frontline of disaster management and primarily responsible for managing events in their local government area. The Blackall-Tambo LDMG is ideally suited to manage disaster events at the community level, based on its understanding of local social, environmental and economic issues as well as knowledge of the infrastructure within the Blackall-Tambo Regional Council local government area.

Disaster Declaration

Where there is a requirement for a person or a class of persons to exercise the additional powers available under the provisions of the *Disaster Management Act 2003* (section 64), the District Disaster Coordinator (DDC) may, with the approval of the Minister, declare a disaster situation for the Disaster District or a part of the Disaster District. The DDC should take reasonable steps to consult with Council prior to any declaration.

There is also provision for the Premier of Queensland and the Minister for Emergency Services to declare a Disaster Situation for the State or a part of the State.

The Chairperson of the State Disaster Management Group or the DDC only, may authorise the exercise of additional powers.

In declaring a disaster situation, the DDC is to be satisfied that a disaster has happened, is happening or is likely to happen and it will be necessary, or reasonably likely to be necessary, to exercise declared disaster powers to prevent or minimise the loss of human life, illness or injury to humans, property loss or damage, or damaging to the environment. The DDC will ensure that information to the DDC is regular and consistent with the seriousness of an event so that an informed decision can be made.

Communication

The Blackall-Tambo LDMG will coordinate effective collection, monitoring, management and dissemination of accurate, useful and timely information and warnings to the public before, during and after disaster events.

Blackall-Tambo Regional Council has secured funding to maintain a Disaster Dashboard which provides updates on weather warnings, road conditions, power outages, emergency contacts, river heights, BoM radar, current fire bans and the road status across the Blackall-Tambo Regional Council local government area. [Blackall-Tambo Disaster Dashboard \(qitplus.com\)](http://qitplus.com)

The principal responsibility for the release of this information through the media and other agencies rests with the Chairperson or their delegate.

Activation

The LDMG can be activated in the following circumstances:

- By the Chairperson of the LDMG (or delegate) on receipt of information regarding an actual, imminent or likely disaster event that has potential to significantly impact one or more communities in the Blackall-Tambo Regional Council local government area; or
- By the Chairperson of the LDMG (or delegate) on receipt of request from the DDC in response to an actual, imminent or likely disaster event; or
- By the Chairperson of the LDMG (or delegate) on receipt of request from an emergency management agency with combat responsibility for a disaster event.

Activation does not necessarily mean the convening of disaster management groups. Initially, it may be for the provision of information to group members as required.

Refer to the **Activation Guideline** for more information.

Escalation

The Blackall-Tambo LDMG is activated according to an escalation model based on the following levels:

1. Alert
2. Lean Forward
3. Stand Up
4. Stand Down

The movement through this table may not be sequential depending on circumstances. Refer to the **Activation Guideline** for more detail.

Triggers to escalate the level of response from Local to District and/or State include, but are not limited to:

- Local resources are exhausted
- Level of expertise and/or asset requirements are beyond local capacity and capability
- Complex and multiple events affecting the area

Local Disaster Coordination Centre

The Blackall-Tambo LDMG is responsible for local disaster coordination during a disaster event. Disaster coordination is facilitated through the establishment of a primary Local Disaster Coordination Centre (LDCC). Other facilities may be identified to support coordination as required.

The primary LDCC is located in the Boardroom, Blackall-Tambo Regional Council, 6 Coronation Drive, Blackall. The secondary LDCC is located at the Blackall-Tambo Regional Council Works Depot, 60 Rose Street, Blackall.

Refer to the **Disaster Coordination Centre Guideline** for further detail on location, setup and management of the local disaster coordination centre.

Warnings and Alerts

Warnings and Alerts are issued by the responsible agency and the Blackall-Tambo LDMG facilitates the dissemination of these warnings and alerts as required to the local community. Refer to the **Public Information and Warnings Sub-plan** for further detail.

Warnings and Alerts may include, but are not limited to:

- Blackall-Tambo Regional Council Disaster Dashboard
[Blackall-Tambo Disaster Dashboard \(qitplus.com\)](#)
- Bureau of Meteorology, issuing severe weather and flood warnings
- Emergency Alert issued by the Queensland Police Service with input from LDMGs and the DDMG. Refer to the Australian Warning System (AWS)
- Standard Emergency Warning Signal (SEWS) issued where life and/or property is threatened by a disaster
- Australian Warning System, a consistent standard warning information system across five key hazards used nationally.

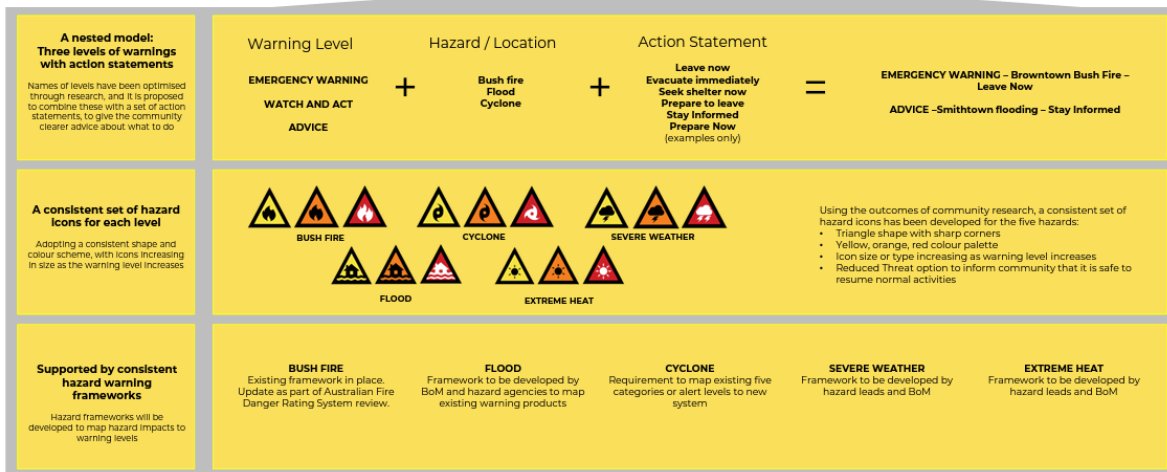
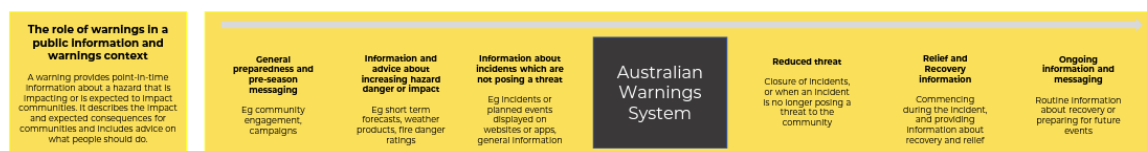
The LDMG may issue disaster messaging to keep the local community informed of the situation.

The Australian Warning System

The Australian Warning System has been developed based on community research and input from Australia's emergency services and hazard agencies.

As part of a major national research project, more than 14,000 people were surveyed or interviewed, to assess community perceptions of existing warning systems and improvements which could make warnings clearer and lead people to take action during hazard events.

The system builds on existing warning frameworks and would apply to bushfire, flood, severe storm, cyclone and extreme heat – but is designed to be adaptable and scalable to other hazards.



Resource Management

Whilst the Blackall-Tambo LDMG has available the combined resources of its member agencies for use in a disaster event, there will be times when the resources will be insufficient.

Where the LDMG requires logistics support and/or resources to meet operational requirements that are beyond local capacity and capability, the LDMG may formally seek assistance through a:

- **Request for Assistance** forwarded to the DDC.
- In all circumstances where additional logistics are required, the DDC will be informed.

Council to Council (C2C)

LGAQ is the Peak body for local government in Queensland. LGAQ provides direct advice and assistance to councils across multiple areas, including in disaster management. Council to Council (C2C) is directly coordinated by the LGAQ. It seeks to provide logistical and resource support to councils during and following disaster events. Blackall-Tambo Regional Council may seek assistance, or offer assistance, through the C2C program as necessary. The DDC will be informed of any C2C requests.

Financial Management

Initially, Council and each agency is responsible for their own financial management when engaged in disaster management activities according to their role and responsibilities. Councils Chief Financial Officer will provide direct support and guidance as part of the role of advisor to the LDMG.

The Blackall-Tambo Regional Council has their own internal system for the financial management of resources. It is responsible for activities undertaken, including any activity that may attract external funding.

The Blackall-Tambo LDMG through Council will ensure a correct collation of expenditure during a disaster event is compiled.

The Blackall-Tambo Regional Council will work with the LDC and LRC to ensure that all financial requests eligible by Council, in Counter Disaster Operations and Emergency Works are submitted through the Queensland Reconstruction Authority for Disaster Recovery Funding Arrangements (DRFA) or State Disaster Relief Arrangements (SDRA) assistance.

Each agency is responsible for lodging similar financial claims on behalf of their respective organisations.

Refer to the Blackall-Tambo Regional Council Financial Policies for further detail.

Disaster Reporting

Situation Reports will be submitted at intervals as determined by the LDC from the member agencies to ensure the Local Disaster Coordination Centre has complete situational awareness.

LDMG Situation Reports will be submitted on a regular basis to the DDC, Longreach. Such reports will be required at times stipulated by the DDC Longreach and will be in the format as prescribed in the Local Disaster Coordination Centre Guideline.

- The review of operational activities undertaken during a disaster is a key component in ensuring capability development and the continuous improvement of disaster management arrangements.
- Post-disaster reviews are conducted to:
- Assess disaster operations undertaken including actions, decisions or processes;
- Document processes that worked well for use in the next operation and disaster management planning
- Assess capability and consider where additional training and/or exercises may enhance capacity

Evacuation

Evacuation is a strategy that may be employed for the safety of the community. It is based on the:

- Decision to evacuate
- Warning to evacuate
- Withdrawal of people
- Shelter of people
- Return of people

Evacuation is a general term used when managing a community that needs to be removed from a potential hazard or threat. Other types of evacuation include:

- Voluntary evacuation, where the community is requested to leave an area by their own means without much assistance
- Directed evacuation, where the community is directed to leave (under a Disaster Declaration which is managed by Police)
- The LDMG manages evacuations within their area of responsibility

The Blackall-Tambo LDMG has developed an **Evacuation Sub-plan** that provides the detail to facilitate an evacuation.

Evacuation Centre Management

Evacuation Centres have been identified by the Blackall-Tambo LDMG for use should the community require evacuation or a central facility together during a disaster event.

The identified facilities and management process are contained in the **Evacuation Centre Management Guideline**.

Resupply

The Blackall-Tambo LDMG is responsible for the management of the resupply of essential items to isolated communities and rural properties. The Blackall-Tambo LDMG conducts resupply in alignment with the Queensland Resupply Guidelines. The Blackall-Tambo LDMG may coordinate the resupply of retailers at Blackall and Tambo during disasters. Messaging will be broadcast on the Disaster Dashboard for the community to contact Blackall-Tambo Regional Council for non-emergency assistance. A Request for Assistance will be forwarded to the DDMG if the LDMG cannot locally source essential supplies.

State approved resupply operations may involve watercraft, fixed wing or rotary wing aircraft. The delivery of supplies by these means is designed to ensure the isolated properties or communities are not financially disadvantaged in ordering essential supplies. They must still pay for the supplies, but the transportation costs are managed through state funding.

*Refer to **Resupply Sub-plan** for further detail.*

PART 8 - Recovery

The Blackall-Tambo Regional Council and its LDMG undertake recovery activities and supports partnering agencies in providing recovery services to the community.

Recovery Functions

Disaster recovery is the coordinated process of supporting affected individuals and communities in the reconstruction of the physical infrastructure, restoration of the economy and of the environment and support for the emotional, social and physical well-being of those affected.

Disaster recovery is a complex and usually a long process that requires a range of services from various government and non-government organisations who contribute to the support of the community across the five functional areas of recovery:

1. Human and Social

Focuses on supporting the emotional, social, physical and psychological health and wellbeing of individuals, families and communities.

2. Economic

Focuses on rectifying the direct and indirect impacts on the economy.

3. Roads and Transport

Focuses on rectifying the effects on transport networks including road, rail, aviation and maritime networks that result in difficulty accessing communities and disruption to critical supply chains.

4. Building

Focuses on rectifying damage and disruption which inhibits the capacity of essential services and the building sector

5. Environment

Focuses on rectifying the impacts on the natural environment either directly or through secondary impacts that include loss of flora and fauna, air and water quality, land degradation and cultural and built heritage listed places

*The Blackall-Tambo Regional Council through the LDMG has developed the **Blackall-Tambo Regional Council Recovery Sub-plan**. The Recovery Sub-plan provides greater detail on how recovery will be implemented within the Blackall-Tambo Regional Council local government area.*

Vulnerable Persons

The LDMG acknowledges that there are vulnerable people in the community and people can become vulnerable due to a disaster impact. The LDMG has limited capacity to manage vulnerable persons and will rely on working with partner stakeholders who have responsibility in this area and through support from the Longreach District Disaster Management Group (DDMG).

Offers of Assistance

In disaster operations and management, the LDMG may receive offers of assistance but may not have the capacity to manage all offers depending on their nature. One way the LDMG will manage offers is through GIVIT under the Queensland Policy for Offers of Assistance and Guideline.

The Queensland Government through the Queensland Reconstruction Authority (QRA) has partnered with GIVIT to provide a mechanism to match donations with community need.

Animals in Disasters

The LDMG recognises that animals both domestic and commercial are impacted by a disaster. The LDMG will liaise with the Blackall-Tambo Regional Council Local Laws and Rural Lands team and the Department of Agriculture and Fisheries to facilitate support for impacted animals. Where this will exceed local capacity, assistance will be sought through the DDC.

Spontaneous Volunteers

Volunteers play a key role in local disaster management response and recovery. Spontaneous volunteers may present during a disaster event. Whilst limited in the Blackall-Tambo Regional Council local government area, the LDMG through Council does not have capacity to manage spontaneous volunteers and would seek assistance from the Longreach DDMG through Volunteering Queensland to provide support with this.

Impact Assessments

Impact assessments inform the disaster management approach and may be undertaken by various agencies due to their role and responsibility. The Blackall-Tambo LDMG is required to undertake their own impact assessments where Council has responsibility but also to liaise with other agencies to collect and collate information to develop an overview of the impact of the disaster on the community to inform disaster management, not only in recovery but also response, preparedness and prevention (mitigation) as applicable.

*Further detail on how impact assessments are managed can be found in the **Blackall-Tambo Regional Council Impact Assessment Sub-plan**.*

Appendix 1 – Amendment Register

<i>Version</i>	<i>Amendment</i>	<i>Author</i>	<i>Date accepted by LDMG</i>	<i>Date adopted by Council</i>
1.0	<i>LDMP written</i>			
1.1	<i>Contact list updated</i>		<i>August 2016</i>	
2.0	<i>Minor update</i>		<i>September 2016</i>	
3.0	<i>Minor update</i>		<i>April 2019</i>	
4.0	<i>Minor Update</i>		<i>August 2019</i>	
5.0	<i>Full rewrite</i>	<i>Craig Neuendorf Phil Kuhne</i>		<i>16 November 2022</i>
5.1	<i>Minor update</i>	<i>Craig Neuendorf Andrea Saunders</i>	<i>3 May 2024</i>	<i>15 May 2024</i>
5.2	<i>Machinery of government changes</i>	<i>Craig Neuendorf</i>	<i>21 November 2024</i>	<i>18 December 2024</i>
5.3	<i>Minor Update</i>	<i>Mike Lollback Andrea Saunders</i>	<i>19 September 2025</i>	<i>15 October 2025</i>

Appendix 2 – Distribution List

Organisation / Agency	Officer (copies)
<i>Blackall-Tambo Regional Council</i>	<i>Mayor, Chair of the LDMG (1) Local Disaster Coordinator, Blackall-Tambo LDMG (1) Regional Recovery and Resilience Coordinator (1)</i>
<i>SES</i>	<i>Blackall-Tambo SES (1)</i>
<i>Queensland Fire Department</i>	<i>Inspector, Fire & Rescue, Longreach (1) Captain, Blackall-Tambo Fire & Rescue (1) Captain, Blackall-Tambo Rural Fire Service (1)</i>
<i>Queensland Police</i>	<i>Officer in Charge, Blackall (1) Officer in Charge, Tambo (1)</i>
	<i>DDC – Longreach (1) Emergency Management Coordinator – Longreach (1)</i>
<i>Queensland Ambulance Service</i>	<i>Officer in Charge, Blackall (1)</i>
<i>Queensland Health</i>	<i>Director of Nursing, Blackall Hospital (1)</i>

Appendix 3 – Blackall-Tambo Disaster Management Planning Framework

The Blackall-Tambo Disaster Management Planning Framework has been developed to guide local disaster management planning and comprises:

Plans

- *Blackall-Tambo Local Disaster Management Plan (LDMP) V.5.2 July 2024*
- *Blackall-Tambo Regional Council Business Continuity Plan December 2016*
- *Central West Regional Resilience Strategy January 2020*
- *Blackall-Tambo Regional Council Public Health Plan*
- *Central West Bushfire Risk Mitigation Plan*
- *Queensland Bushfire Plan*

Sub-plans - Support

- *Blackall-Tambo Regional Council Recovery Sub-plan*
- *Blackall-Tambo Disaster Management Communications Sub-plan*
- *Blackall-Tambo Local Evacuation Sub-plan*
- *Blackall-Tambo Local Resupply Sub-plan*
- *Blackall-Tambo Evacuation Sub-plan*

Sub-plans – Hazard Specific

- *Blackall-Tambo Local Pandemic Sub-plan*

Guidelines

- *Local Activation Guideline*
- *Local Disaster Coordination Centre Guideline*
- *Local Evacuation Centre Management Guideline*
- *Public Information and Warnings Guideline*
- *Local Resource Management Guideline*
- *Local Financial Management Guideline*
- *Local Impact Assessment Guideline*

Community Information Documents

- *Be Ready Central West Disaster Management Flip Book*
www.btrc.qld.gov.au/downloads/file/928/be-ready-central-west

Notes

- *The Blackall-Tambo LDMG will review their suite of disaster management plans annually to determine if they have an appropriate level of plans and guidelines in place to support local disaster management activities*
- *Generally, plans and sub-plans will be provided in a restricted and public version*
- *Generally, guidelines may only be developed as a restricted version as they are an internal management document containing confidential information*

Appendix 4 – Blackall-Tambo Local Disaster Management (LDMG) Terms of Reference

Establishment

The Local Disaster Management Group (LDMG) is established under Section 29 of the *Disaster Management Act 2003* (the Act).

Role

The local government, through the LDMG, retains primary responsibility for managing disaster events contained within their local government area. (S.4A(c) of the Act)

Functions

The LDMG has the following functions (S.30 of the Act):

- To ensure that disaster management and disaster operations in the area are consistent with the State group's strategic policy framework for disaster management for the State;
- To develop effective disaster management, and regularly review and assess the disaster management;
- To help the local government for its area to prepare a local disaster management plan;
- To identify and provide advice to the relevant district group about support services required by the local group to facilitate disaster management and disaster operations in the area;
- To ensure the community is aware of ways of mitigating the adverse effects of an event, and preparing for, responding to and recovering from a disaster;
- To manage disaster operations in the area under policies and procedures decided by the State group;
- To provide reports and make recommendations to the relevant district group about matters relating to disaster operations;
- To identify and coordinate the use of resources that may be used for disaster operations in the area;
- To establish and review communications systems in the group, and with the relevant district group and other local groups in the disaster district of the relevant district group, for use when a disaster happens;
- To ensure information about a disaster in the area is promptly given to the relevant district group;
- To perform other functions given to the group under this Act;
- To perform a function incidental to any of the previous functions mentioned.

LDMG Priorities

- Development of function-specific planning groups to support the Local Disaster Management Group;
- Development of a comprehensive hazard and risk assessment for the Blackall-Tambo Regional Council area;
- Development of a disaster mitigation strategy for the Blackall-Tambo Regional Council;
- Development of a comprehensive disaster management arrangements suite of documents for the Blackall-Tambo Regional Council;
- Development and resourcing of primary and secondary disaster coordination centres for the Blackall-Tambo Regional Council;
- Development of a holistic disaster recovery plan for the Blackall-Tambo Regional Council;
- Development of an effective disaster preparedness community awareness strategy;
- Develop and maintain effective local community communications strategies;
- Develop and maintain a local disaster management group membership who is appropriately qualified and trained.

Membership

Membership of the Local Disaster Management Group (LDMG) is outlined in the *Disaster Management Regulation 2014* (the Regulation). Appointments under the *Disaster Management Act 2003* (the Act) can be made to a person or by position (see section 24A of the *Acts Interpretation Act 1954*). It is strongly recommended that appointments be made by position which eliminates the need for a new appointment when a change in personnel occurs.

Generally, an LDMG is comprised of:

- Chairperson (must be a councillor) appointed by the relevant local government under section 34 of the Act.
- Deputy Chairperson (recommended to be a councillor) appointed by the relevant local government under section 34 of the Act.
- Local Disaster Coordinator (must be an employee of the local government) appointed by the relevant local government under section 35 of the Act.

- Person nominated by the Commissioner, Queensland Police Service (QPS) appointed by the relevant local government under section 33 of the Act.
- Other persons appointed by the relevant local government under section 33 of the Act, as identified by the local government's functional requirements.

Local group members are appointed under section 33 of the Act. It is suggested that LDMG membership consists of representatives with the necessary expertise or experience and delegation authority to assist with a comprehensive, all hazards, all agencies approach to disaster management.

Section 14(1) of the Regulation allows a member of a disaster management group, with the approval of the Chairperson, to appoint, by signed notice, another person as their deputy. In identifying and nominating a deputy, a disaster management group member must acknowledge that the nominated person has the necessary expertise or experience to perform the functions associated with membership of the group.

Chairperson and deputy chairperson

The Chairperson and Deputy Chairperson of the LDMG are the persons appointed by the relevant local government for the LDMG. The Chairperson must be a Councillor of that Local Government (S. 34 the Act & Reg. 10).

Functions of chairperson of the LDMG

In accordance with Section 34A of the Act, the chairperson of the LDMG has the following functions-

- (a) To manage and coordinate the business of the group;
- (b) To ensure, as far as practicable, that the group performs its functions;
- (c) To report regularly to the relevant district group, and the Commissioner, QPS, about the performance by the local group of its functions.

Local Disaster Coordinator

In accordance with Section 35 of the Act-

- (1) The Chairperson of the local group must, after consulting with the Chief Executive Officer, appoint the Chief Executive Officer or an employee of the relevant local government as a Local Disaster Coordinator of the group.
- (2) The Chairperson of the local group may appoint a person mentioned in subsection (1) as a Local Disaster Coordinator of the group only if satisfied the person has the necessary expertise or experience to be a Local Disaster Coordinator.
- (3) The appointment under subsection (2) must be in writing and may only be revoked in writing

Functions of the Local Disaster Coordinator

In accordance with Section 36 of the Act, the local disaster coordinator has the following functions-

- (a) To coordinate disaster operations for the local group;
- (b) To report regularly to the local group about disaster operations;
- (c) To ensure, as far as practicable, that any strategic decisions of the local group about disaster operations are implemented.

Notice about membership of the LDMG

In accordance with Section 37 of the Act, the relevant local government for a local group must, at least once a year, give written notice of the members of the group to the Commissioner, QPS and the Longreach District Disaster Coordinator (DDC).

Members

Position	Holder
Chair LDMG	Mayor, Blackall-Tambo Regional Council
Deputy Chair	Councillor, Blackall-Tambo Regional Council
Local Disaster Coordinator	Chief Executive Officer, Blackall-Tambo Regional Council
Deputy Local Disaster Coordinator and Recovery Coordinator	Director of Organisational Performance

<i>Members</i>	<ul style="list-style-type: none"> ▪ <i>Officer in Charge, Blackall Police Station, Queensland Police Service</i> ▪ <i>Officer in Charge, Tambo Police Station, Queensland Police Service</i> ▪ <i>Inspector, Fire and Rescue, Queensland Fire Department, Longreach</i> ▪ <i>Captain, Fire and Rescue, Queensland Fire Department, Blackall</i> ▪ <i>Local Controller, Blackall-Tambo Regional Council State Emergency Services, Blackall</i> ▪ <i>Officer in Charge, Queensland Ambulance Service, Blackall</i> ▪ <i>Director of Nursing, Blackall Hospital</i> ▪ <i>Blackall-Tambo Regional Council, Group Manager Environment Health and Compliance</i> ▪ <i>Blackall-Tambo Regional Council, Group Manager Council and Customer Support</i>
----------------	---

Advisory Members

<i>Advisory Members</i>	<ul style="list-style-type: none"> ▪ <i>Emergency Management Coordinator, Queensland Police Service, Longreach</i> ▪ <i>Area Director, Rural Operations, Queensland Fire Department, Barcardine</i> ▪ <i>Director, Lifestyle and Community, Blackall-Tambo Regional Council</i> ▪ <i>Industry Representatives as required</i> ▪ <i>Representative from Ergon</i> ▪ <i>Representative from Telstra</i> ▪ <i>School Representative</i> ▪ <i>Representative from Bureau of Meteorology</i> ▪ <i>Representative from the Department of Housing, Local Government, Planning & Public Works</i> ▪ <i>Biosecurity Officer, Biosecurity Queensland, DPI</i> ▪ <i>Suppliers (groceries and logistics) within the Blackall and Tambo region</i> ▪ <i>Group Manager, People, Culture and Safety – Blackall Tambo Regional Council</i> ▪ <i>SES Area Controller, Longreach</i> ▪ <i>Local Controller, Blackall-Tambo Regional Council State Emergency Services, Tambo</i> ▪ <i>Blackall-Tambo Regional Council – Chief Financial Officer</i>
-------------------------	---

Member Obligations

- *Attend LDMG activities with a full knowledge of their organisations’ resources and services and the expectations of their organisation*
- *Are available and appropriately briefed to actively participate in LDMG activities to ensure that plans, projects and operations use the full potential of their organisation, while recognising any limitations*
- *Are appropriately positioned within their agency to be able to commit agency resources to LDMG normal business activities*
- *Have a deputy who is appropriately trained to take on their responsibilities should they be unavailable or to provide additional support during extended operations*
- *Contribute to Disaster Management Planning for the Local Government area.*

Advisory Member Obligations

- *As required, attend LDMG activities with a full knowledge of their organisations’ resources and services and the expectations of their organisation*
- *As required, be available and appropriately briefed to actively participate in LDMG activities to ensure that plans, projects and operations use the full potential of their organisation, while recognising any limitations*
- *As required, be appropriately positioned within their agency to be able to commit agency resources to LDMG normal business activities*
- *Contribute to Disaster Management Planning for the Local Government area.*

Meetings

LDMG meetings must be held at least once every 6 months at the times and places decided by the Chairperson of the group. In addition, the Chairperson of the LDMG must call a meeting if asked in writing by the DDC or if asked in writing by at least one-half of the members of the LDMG (Reg. 12).

The Chairperson of the LDMG is to preside at all meetings of the group at which the Chairperson is present. If the Chairperson is absent from a meeting of the LDMG, the Deputy Chairperson is to preside. If the Chairperson and Deputy Chairperson are both absent from a meeting of the LDMG, the member of the group nominated by the Chairperson is to preside, or if the Chairperson does not nominate a member, the member nominated by the Deputy Chairperson is to preside. If the offices of Chairperson and Deputy Chairperson are vacant, the member of the group chosen by the members' present is to preside (Reg. 16).

A quorum for an LDMG meeting is the number equal to one-half of its members for the time being holding office plus one. A LDMG must keep minutes of its meetings (Reg. 13 & 18).

A LDMG may hold meetings or allow members of the group to take part in its meetings, by using any technology that reasonably allows members to hear and take part in discussions as they happen e.g. teleconferencing. A member who takes part in an LDMG using this technology is taken to be present at the meeting (S.38 of the Act & Reg. 17).

Local Disaster Management Plan (LDMP)

A local government must prepare an LDMP for their local government which must include provision for (S.57 of the Act):

- *The State group's strategic policy framework for disaster management for the State, and the local government's policies for disaster management;*
- *The roles and responsibilities of entities involved in disaster operations and disaster management in the area;*
- *The coordination of disaster operations and activities relating to disaster management performed by the entities;*
- *Events that are likely to happen in the area;*
- *Strategies and priorities for disaster management for the area;*
- *The matters stated in the disaster management guidelines as matters to be included in the LDMP;*
- *Other matters about disaster management in the area the local government considers appropriate.*

The LDMP must be consistent with the disaster management standards and disaster management guidelines. (S.58 the Act)

The LDMG may review or renew its LDMP when the local government considers it appropriate. However, the local government must review the effectiveness of the LDMP at least once a year. (S.59 of the Act)

The LDMP must be available for inspection, free of charge, by members of the public. (S.60 the Act)

Power of delegation

In accordance with Section 143(8) of the Act, the Local Disaster Coordinator may delegate the coordinator's functions under section 36 to an appropriately qualified person.

Local Recovery Coordinator (LRC)

The LDMG has appointed an LRC to coordinate recovery at the local level. The person appointed should not be the same person appointed as the local disaster coordinator. The LRC is the Blackall-Tambo Regional Council Director of Organisational Performance.

The LRC has the following functions:

- *Liaise regularly with the local disaster coordinator during disaster operations;*
- *Chair the Local Recovery Group (LRG);*
- *Liaise with functional lead agency representatives;*
- *Work with agencies and the community to assist the LDMG to implement their Recovery Sub-Plan and coordinate a recovery strategy during disaster operations.*

Appendix 5 – Blackall-Tambo Disaster Management Risk Register

The Blackall-Tambo LDMG Risk Register is the summary of a broader Risk Assessment Process that considered the likelihood and consequences of a range of risk in the communities within the Blackall-Tambo Regional Council geographic area.

The Blackall-Tambo LDMG Risk Register identifies several treatment options for many of these risks, but many of the treatment options identified have been forwarded to the DDC and/or other agencies for development of a treatment plan.

		Consequence				
		Insignificant	Minor	Moderate	Major	Catastrophic
Likelihood						
CONTROL LEVEL EFFECTIVENESS	Almost Certain	Moderate	High	Extreme	Extreme	Extreme
	Likely	Moderate	High	High	Extreme	Extreme
	Possible	Low	Moderate	High	Extreme	Extreme
	Unlikely	Low	Low	Moderate	High	Extreme
	Rare	Low	Low	Moderate	High	High

Risk Register

<i>Natural Hazard</i>	<i>Most Vulnerable Elements</i>	<i>Natural Disaster Risks</i>	<i>Likelihood</i>	<i>Consequence</i>	<i>Risk Priority</i>	<i>Treatment</i>
<p>Severe Weather Thunderstorms, Tornadoes</p>	<p>Buildings constructed prior to 1983 or poorly maintained and/or in exposed locations.</p> <p>Industrial buildings, lifelines.</p>	<ul style="list-style-type: none"> ▪ Serious injury or death from building damage, flying debris, electrocution from fallen power lines. ▪ Widespread building damage. ▪ Loss of power supply has major impact on other lifelines and industry. ▪ Major economic disruption at both local and State levels. ▪ Response and recovery facilities may be inadequate. 	Possible	Moderate	High	
<p>Bushfire</p>	<p>Areas indicated on bushfire hazard maps.</p>	<ul style="list-style-type: none"> ▪ Serious injury or death from direct contact or by smoke inhalation. ▪ Building damage in affected area. ▪ Economic disruption. ▪ Danger to road traffic from smoke. ▪ Means of egress may be cut. ▪ Loss of agriculture crops, damage to grazing land and loss of livestock. ▪ Mental health impact on communities. 	Likely	Moderate	High	

<i>Natural Hazard</i>	<i>Most Vulnerable Elements</i>	<i>Natural Disaster Risks</i>	<i>Likelihood</i>	<i>Consequence</i>	<i>Risk Treatment Priority</i>
<i>Flood</i>	<i>Areas indicated on flood maps as being below 50 Year or 100 Year ARI maps.</i>	<ul style="list-style-type: none"> ▪ <i>Serious injury or death from drowning.</i> ▪ <i>Building damage in affected area.</i> ▪ <i>Economic disruption, river erosion, sediment to farmland.</i> ▪ <i>Means of egress may be cut – affecting supplies and outside assistance.</i> ▪ <i>Community drift to more Shire centres.</i> 	<i>Likely</i>	<i>Moderate</i>	<i>High</i>
<i>Drought</i>	<i>Agricultural communities and businesses.</i>	<ul style="list-style-type: none"> ▪ <i>Risk to rural economies.</i> ▪ <i>Psychosocial impact to rural communities.</i> ▪ <i>Degradation of the environment.</i> 	<i>Possible</i>	<i>Moderate</i>	<i>High</i>

<i>Natural Hazard</i>	<i>Most Vulnerable Elements</i>	<i>Natural Disaster Risks</i>	<i>Likelihood</i>	<i>Consequence</i>	<i>Risk Priority</i>	<i>Treatment</i>
<i>Heatwave</i>	<ul style="list-style-type: none"> ▪ Older people ▪ Babies and young children ▪ People with: ▪ Serious mental health ▪ Certain medication ▪ Chronic conditions ▪ Existing temperature from infection ▪ Misuse alcohol or take illicit drugs ▪ Mobility problems <p><i>Physically active, (manual workers and sportsmen and women)</i></p>	<ul style="list-style-type: none"> ▪ Increased hospital admissions relating to heat cramps, heat exhaustion, heat stroke, stress, dehydration, or because of heat exacerbating existing conditions. ▪ Increased rates of certain crimes particularly those related to aggressive behaviour such as homicide. ▪ Increased number of work- related incidents and reduced work productivity. ▪ Decreased sports performance. ▪ Strain on critical lifelines because of increased electricity/ water usage. 	<i>Possible</i>	<i>Minor</i>	<i>Moderate</i>	

Key Critical Infrastructure

<i>Infrastructure Element</i>	<i>Description</i>	<i>Vulnerabilities</i>	<i>Resiliencies</i>
<i>Power</i>	<p><i>BTRC is well connected to the grid and has emergency generator capacity in critical locations.</i></p> <p><i>Many private properties, businesses and individuals also have emergency generation capacity.</i></p>	<p><i>Potential for loss of power over an extended period would severely test the capacity for generation.</i></p>	<p><i>Emergency power generation capacity exists for essential council services in Blackall and Tambo.</i></p> <p><i>Rural properties on generators are vulnerable during prolonged wet weather or flood events.</i></p>
<i>Reticulated Water</i>	<p><i>Reticulated water is provided to both townships through the Great Artesian Basin (GAB). The water is distributed through bores under pressure from the GAB.</i></p>	<p><i>The collapse of a bore head would place additional pressure on the functioning bores.</i></p>	<p><i>As the water is provided under natural pressure and is from the GAB, there is minimal risk to the interruption of service or contamination.</i></p>

<i>Infrastructure Element</i>	<i>Description</i>	<i>Vulnerabilities</i>	<i>Resiliencies</i>
<i>Sewerage</i>	<p><i>Blackall and Tambo have sewerage systems.</i></p> <p><i>Relies on pump working with elevated reservoirs.</i></p>	<p><i>Potential for loss of power for 8-12 hours would result in overflows at the pump stations.</i></p> <p><i>The times stated above are dependent on demand and may be less than indicated.</i></p>	<p><i>All pump stations have the capacity for generator connection to the pumps and re-establish holding capacity of the pump stations.</i></p>
<i>Communication</i>	<p><i>BTRC is well connected to communications infrastructure.</i></p> <p><i>Telephone, internet and (where available) mobile services have good reliability.</i></p>	<p><i>Loss of communications would severely limit ability to relay important safety messages to the community.</i></p>	<p><i>Robust systems increase operational capability and ensure ability to keep community informed.</i></p> <p><i>Door knocks are the secondary method of communications.</i></p>

Infrastructure Element	Description	Vulnerabilities	Resiliencies
Transport Road	<p>Sealed bitumen highway (Landsborough Highway) between Augathella/Tambo and Blackall/Barcaldine. Sealed bitumen road between Blackall and Jericho and a well maintained bitumen and gravel road between Tambo and Alpha. Other areas of the BTRC are linked by unsealed roads.</p>	<p>Almost all roads in the area are subject to inundation from riverine flooding.</p> <p>Limited remedial work is practical to eliminate this vulnerability.</p>	<p>Most sealed roads have been engineered to withstand small flooding events.</p> <p>Maintenance and repair activities are scheduled to maximise periods of usage.</p>
Transport Air	<p>The Blackall Airport has regular commuter aircraft and comprises a 1688m sealed runway.</p> <p>Other main airstrips in the area include:</p> <p>Tambo - 1300m</p>	<p>Blackall airstrip is subject to flooding if a major event is experienced. Tambo airstrip is not subject to flooding however, is inaccessible during a flood event .</p>	<p>BTRC have contingency and business continuity plans in place for the Blackall Airport.</p>

Appendix 6 – Hazardous Material Sites

Hazardous materials production and storage facilities with potential risk to the community are:

Blackall

Site	Description	Quantities (if known)	Comments
BP Service Station Ph: 4657 4422	Small storage facility for public sale	ULP - 17,000 litres PULP - 13,000 litres Diesel - 17,000 litres	Underground storage
BP Depot Ph: 4657 4455	Large storage depot	ULP – 52,060 litres Ultimate 98 – 52,400 litres Diesel – 208,000 litres AvGas – 2,400 litres LPG – 400kg LPG (kitchen) – 570 litres	Above ground storage 12 x 200 litre drums Swap & Go cylinders 3 x 190 litre canisters
Caltex Service Station Ph: 4657 4249	Small storage facility for public sale	ULP – 20,000 litres PULP – 8,500 litres Diesel – 10,000 litres	Underground storage
Blackall Airport Ph: 4658 1963	Domestic aviation terminal & fuelling	Jet A1 – 18,000 litres Av Gas – 18,000 litres	Above ground double skinned tankers storage
Blackall Council Depot, 60 Rose Street, Blackall Ph: 4621 6600	Small storage facility for council vehicle use	ULP – 4,500 litres Diesel – 33,550 litres	Underground and above ground storage
Curley Transport Ph: 4657 4451	Pad mount fuel storage / dispensing for company use	Diesel – 68,000 litres	Above ground storage
IOR Ph: 1300 457 467	Pad mount fuel storage / dispensing	Diesel – 62,100 litres Ad Blue – 5,000 litres	Above ground storage
Elders Merchandise Ph: 4657 8000	Various quantities of animal husbandry and weed treatment chemicals	Various amounts	Stored in various container sizes

Site	Description	Quantities (if known)	Comments
Nutrien Ag Solutions Ph: 4657 4299	Various quantities of animal husbandry and weed treatment chemicals	Various amounts	Stored in various container sizes
Blackall Aquatic Centre Ph: 4657 4975	Small storage facility for chlorine and acid	Granu-Cid 750 litres (50 x 15 litre drums) Chlorine granules – 400kg (40 x 10kg buckets)	Stored on pallets on bunting near pool filters
Woodham's Petroleum outside Blackall Motel	Small storage facility for public sale.	5,000 ULP 22,500 Diesel	ULP is stored underground, and diesel is stored above ground.

Tambo

Site	Description	Quantities (if known)	Comments
Tambo Council Depot Ph: 4621 6600	Small storage facility for council vehicle use	Diesel – 28,960 litres	Above ground storage
Woodham's Service Station Ph: 4654 6881	Small storage facility for public sale	ULP – 17,500 litres PULP – 18,800 litres Diesel – 84,500 litres	Underground storage
Gerard Johnson Transport Ph: 4654 6810	Small storage facility for company use	Diesel – 60,000 litres	Above ground storage
Adrian Johnson Pot Hole Park Ph: 0428 250 352	Small storage facility for company use	Diesel – 27,000 litres	Above ground storage
Longhorn Transport Ph: 0427 579 698	Small storage facility for company use	Diesel – 27,000 litres	Above ground storage
Tambo Aquatic Centre Ph: 0477 031 327	Small storage facility for chlorine and other chemicals	50 x 15 litres Granucide Liquid pool acid 500kg chlorine granules	Stored in locked shed

<i>Nutrien Ag Solutions Ph: 4654 6244</i>	<i>Various quantities of animal husbandry and weed treatment chemicals</i>	<i>Various amounts</i>	<i>Stored in various sized containers</i>
---	--	------------------------	---

Most major roads in the region link through both Blackall and Tambo and are used to transport hazardous materials in quantity. These road corridors are therefore identified as potential hazardous material sites.

Appendix 7 – Local Agency Disaster Management Role & Responsibilities

Agency	Local Role and Responsibilities
<p><i>Blackall-Tambo Regional Council (BTRC)</i></p>	<p><i>Continuity of Council services and disaster management capacity:</i></p> <ul style="list-style-type: none"> ▪ <i>Maintenance of Council functions</i> ▪ <i>Establishment of Local Disaster Management Group</i> <p><i>Maintenance of normal Council services to the community:</i></p> <ul style="list-style-type: none"> ▪ <i>Road condition reporting</i> ▪ <i>Road closures</i> ▪ <i>Water</i> ▪ <i>Sewerage</i> ▪ <i>Refuse disposal</i> ▪ <i>Public health</i> ▪ <i>Animal control</i> ▪ <i>Environmental protection</i> <p><i>Maintenance of a disaster response capability:</i></p> <ul style="list-style-type: none"> ▪ <i>Establish Local Disaster Coordination Centre (LDCC) capacity;</i> ▪ <i>Maintain operational support resources</i>
<p><i>Local Disaster Management Group (LDMG)</i></p>	<ul style="list-style-type: none"> ▪ <i>Development of Local Disaster Management Plan</i> ▪ <i>Support and promote public education and/or awareness programs</i> ▪ <i>Support operation of LDCC including identifying sufficient personnel to operate the LDCC</i> ▪ <i>Coordination of support to local response agencies</i> ▪ <i>Initial and on-going impact assessment</i> ▪ <i>Support provision of public information prior to, during and following disaster</i> ▪ <i>Provide advice on authorised evacuation</i> ▪ <i>Support resourcing, staffing and operation of Evacuation Centres</i> ▪ <i>Provide local community support services</i>

Agency	Local Role and Responsibilities
<p><i>QPS (Disaster Management)</i></p>	<ul style="list-style-type: none"> ▪ <i>Coordinate policy, planning and operational advice and assistance to local disaster managers</i> ▪ <i>Coordinate State and Commonwealth assistance for local disaster management and disaster operations</i> ▪ <i>Coordinate provision of disaster management training</i> ▪ <i>Deploy EMC to support disaster management and operations</i>
<p><i>QFD (Queensland Fire Department)</i> <i>QFR (Queensland Fire and Rescue)</i></p>	<p><i>Maintain QFR functions:</i></p> <ul style="list-style-type: none"> ▪ <i>Fire control</i> ▪ <i>Fire prevention</i> ▪ <i>Rescue of trapped persons</i> ▪ <i>Swift water rescue</i> ▪ <i>Specialist Urban Search and Rescue</i> ▪ <i>Assist in pumping out of flooded buildings</i> ▪ <i>Assist in clean-up of flood affected buildings</i> ▪ <i>Management of hazardous material situations (including provisions of Safety Data Sheets)</i>
<p><i>QFD (Queensland Fire Department)</i> <i>RFSQ (Rural Fire Service Queensland)</i></p>	<p><i>Maintain RFSQ functions:</i></p> <ul style="list-style-type: none"> ▪ <i>Provide control, management and pre-incident planning of fires</i> ▪ <i>Primary agency for bushfires</i>
<p><i>Queensland Police Service (QPS)</i></p>	<p><i>Overall management of Queensland's disaster management system on behalf of the SDMG</i></p> <p><i>Maintain police functions:</i></p> <ul style="list-style-type: none"> ▪ <i>Preservation of law and order</i> ▪ <i>Prevention of crime</i> ▪ <i>Security of possible crime scenes</i> ▪ <i>Investigation of the criminal aspect of any event</i> ▪ <i>Coronial investigation procedures</i> ▪ <i>Traffic control, including assistance with road closures and maintenance of roadblocks</i> ▪ <i>Crowd management/public safety</i> ▪ <i>Coordination of search and rescue</i> ▪ <i>Security of evacuated areas</i> ▪ <i>Registration of evacuated persons</i>

Agency	Local Role and Responsibilities
<p><i>Queensland Ambulance Service (QAS)</i></p>	<p><i>Maintain QAS functions:</i></p> <ul style="list-style-type: none"> ▪ <i>Triage, assessment, treatment and transportation of injured persons</i> ▪ <i>Provide assistance with medical emergency evacuations</i> ▪ <i>Provision of advice regarding medical special needs sectors of the community</i>

<p><i>QPS - State Emergency Service (SES) and Emergency Service Unit (ESU)</i></p>	<ul style="list-style-type: none"> ▪ <i>Assist community to prepare for, respond to and recover from an event or disaster</i> ▪ <i>Support public education and awareness strategies</i> ▪ <i>Assist with rescue of trapped or stranded persons</i> ▪ <i>Flood boat operations</i> ▪ <i>Conduct search operations for missing persons</i> ▪ <i>Emergency repair/protection of damaged and/or vulnerable buildings</i> ▪ <i>Assistance with debris clearance</i> ▪ <i>Assist Police with traffic control activities</i> ▪ <i>Short term welfare support to response agencies</i> ▪ <i>Assist with impact assessment</i> ▪ <i>Assist with establishment and maintenance of communications systems</i> ▪ <i>Provide emergency lighting</i>
--	---

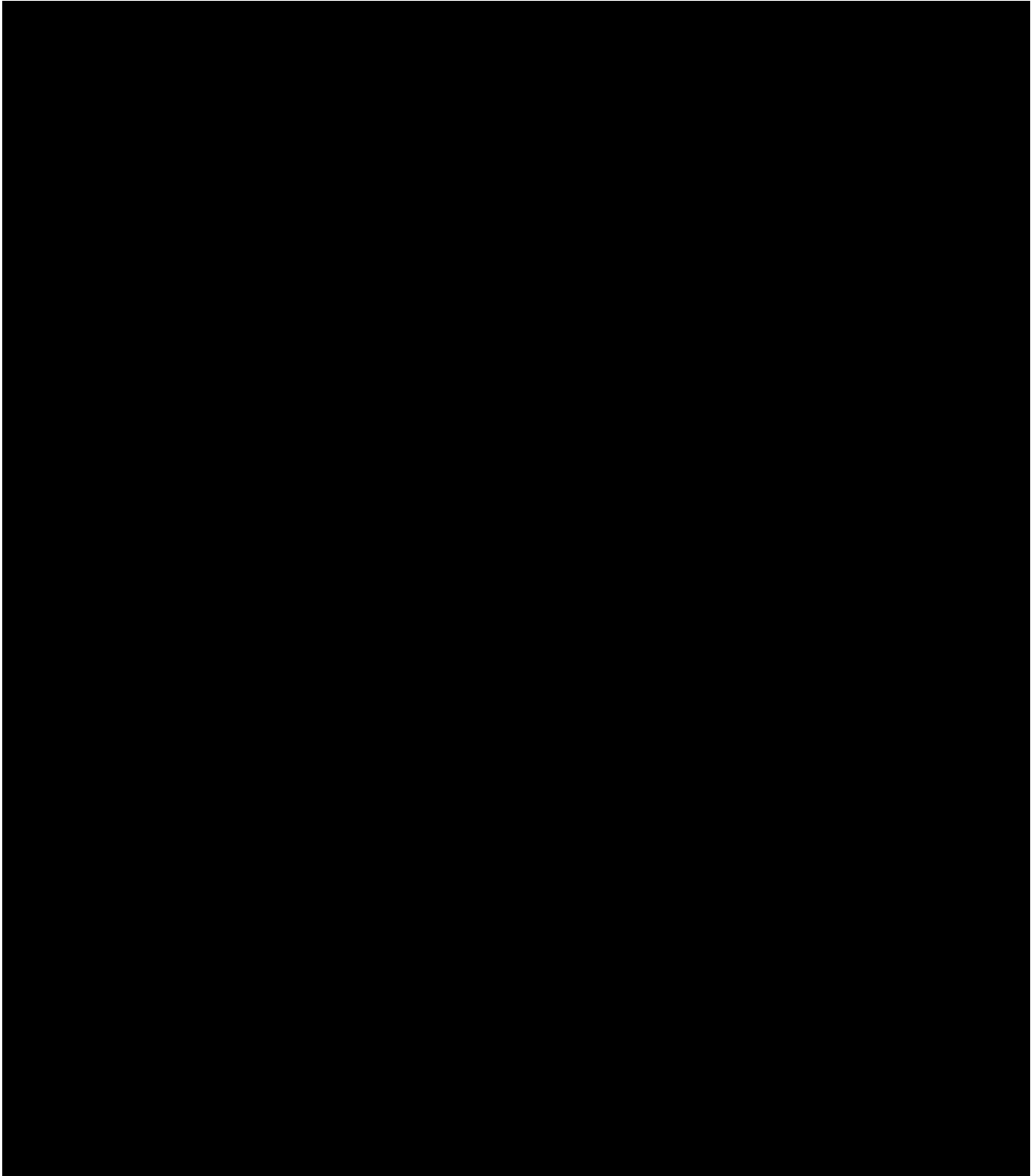
Agency	Local Role and Responsibilities
<p><i>Queensland Health (Q-Health)</i></p>	<p><i>Maintain Health services:</i></p> <ul style="list-style-type: none"> ▪ <i>Coordination of medical resources</i> ▪ <i>Public health advice and warnings to participating agencies and the community</i> ▪ <i>Psychological and counselling services for disaster affected persons</i> ▪ <i>Ongoing medical and health services required during the recovery period to preserve the general health of the community.</i>
<p><i>Queensland Reconstruction Authority (QRA)</i></p>	<ul style="list-style-type: none"> ▪ <i>Administer reconstruction activities from a disaster event</i> ▪ <i>Build a more disaster resilient Queensland</i> ▪ <i>Lead agency for recovery</i>
<p><i>Industry Representatives (eg Ergon, Telstra)</i></p>	<ul style="list-style-type: none"> ▪ <i>Advise on industry-specific effects of any potential disaster event</i> ▪ <i>Advise on the response assistance that industry can provide via specialist resources, manpower etc</i> ▪ <i>Provide Situation Reports and/or Damage/Impact Reports to the LDMG to ensure appropriate support is provided</i>
<p><i>Churches of Christ</i></p>	<ul style="list-style-type: none"> ▪ <i>Recovery role</i>

Appendix 8 – Contact Directory

The LDMP Contact List is not to be disclosed as public information. Note that mobile notification is the preferred distribution method should the group require to “lean forward / stand up.”

Name	Designation	Contact Details
------	-------------	-----------------

MEMBERS



<i>Name</i>	<i>Designation</i>	<i>Contact Details</i>

ADVISORS

--	--	--

<i>Name</i>	<i>Designation</i>	<i>Contact Details</i>
-------------	--------------------	------------------------

--	--	--

<i>Name</i>	<i>Designation</i>	<i>Contact Details</i>

Entries in the contact list will be made in accordance with the information privacy principles contained in Schedule 3 of the Information Privacy Act 2009.

Appendix 9 - Glossary

A comprehensive list of disaster management acronyms and definitions can be found at the following sites:

- Australian Institute of Disaster Resilience (AIDR) – www.knowledge.aidr.org.au/glossary
- Queensland Government Disaster website – www.disaster.qld.gov.au/dmg/Glossary/Pages/default.aspx

A general rule for the use of an acronym within this document is to write out the full name followed by the acronym in brackets, then the acronym is used where appropriate throughout the document

The following is a list of the most common terms and acronyms used in the LDMP and its definition.

<i>Term/Acronym</i>	<i>Meaning</i>
<i>BoM</i>	<i>Bureau of Meteorology</i>
<i>BTRC</i>	<i>Blackall-Tambo Regional Council</i>
<i>Coordination:</i>	<i>The bringing together of agencies and individuals to ensure effective Disaster Management but does not include the control of agencies and individuals by direction.</i>
<i>DDC</i>	<i>District Disaster Coordinator</i>
<i>DDMG</i>	<i>District Disaster Management Group</i>
<i>Disaster:</i>	<i>A disaster is a serious disruption in a community, caused by the impact of an event that requires a significant coordinated response by council, state and other agencies to manage the event and help the community recover from the disruption.</i>
<i>Disaster Coordination Centre:</i>	<i>A centre established at local level as a centre of communication and coordination during response and recovery operations.</i>
<i>Disaster Management:</i>	<i>Arrangements about managing the potential adverse effects of an event, including, for example, arrangements for mitigating, preventing, preparing for, responding to and recovering from a disaster.</i>
<i>Disaster Operations:</i>	<i>Activities undertaken before, during or after an event happens to help reduce loss of human life, illness or injury to humans, property loss or damage, or damage to the environment, including for example, activities to mitigate the adverse effects of the event.</i>
<i>EMC</i>	<i>Emergency Management Coordinator</i>
<i>Evacuation:</i>	<i>The planned movement of persons from an unsafe or potentially unsafe location to a safer location and their eventual return.</i>
<i>LDC</i>	<i>Local Disaster Coordinator</i>
<i>LDCC</i>	<i>Local Disaster Coordination Centre</i>
<i>LDMG</i>	<i>Local Disaster Management Group</i>

<i>Term/Acronym</i>	<i>Meaning</i>
<i>LDMP</i>	<i>Local Disaster Management Plan</i>
<i>PPRR</i>	<i>Prevention, preparedness, response and recovery</i>
<i>QAS</i>	<i>Queensland Ambulance Service</i>
<i>QDMA</i>	<i>Queensland Disaster Management Arrangements</i>
<i>QFD</i>	<i>Queensland Fire Department</i>
<i>QH</i>	<i>Queensland Health</i>
<i>QPS</i>	<i>Queensland Police Service</i>
<i>Recovery:</i>	<i>The coordinated process of supporting emergency-affected communities in reconstruction of the physical infrastructure and restoration of emotional, social, economic, and physical well-being</i>
<i>Relief:</i>	<i>The provision of immediate shelter, life support and human needs of persons affected by, or responding to, an emergency. It includes the establishment, management and provision of services to emergency relief centres</i>
<i>RFSQ</i>	<i>Rural Fire Service Queensland</i>
<i>RRRC</i>	<i>Regional Recovery and Resilience Coordinator</i>
<i>SDCC</i>	<i>State Disaster Coordination Centre</i>
<i>SDMP</i>	<i>State Disaster Management Plan</i>
<i>SES</i>	<i>State Emergency Service</i>
<i>XO</i>	<i>Executive Officer</i>

Appendix 10 – Reference List

Legislation

- *Disaster Management Act 2003*
- *Disaster Management Regulations 2014*
- *Public Safety Preservation Act 1986*
- *Police Powers and Responsibilities Act 2000*
- *Other specific legislation as required e.g. Public Health Act 2005 for Pandemic*

Policy

- *Disaster Management Strategic Policy Statement (SPS): Articulates the approach, objectives & strategies for disaster management for the State.*
- *Queensland Offers of Assistance Policy*

Plans

- *State Disaster Management Plan (SDMP)*
- *Queensland Recovery Plan*
- *Longreach District Disaster Management Plan*

Standards and Assurance

- *Emergency Management Assurance Framework (IGEM)*
- *Standard for Disaster Management in Queensland*

Other Doctrine

- *National Disaster Recovery Principles*
- *Queensland Emergency Risk Management Framework*
- *Queensland Strategy for Disaster Resilience*
[Queensland Strategy for Disaster Resilience | Queensland Reconstruction Authority \(qra.qld.gov.au\)](https://www.qra.qld.gov.au/queensland-strategy-for-disaster-resilience)
- *Queensland Disaster Management Training Framework*

Guidelines

- *Prevention, Preparedness, Response & Recovery Disaster Management Guideline*
- *Queensland Emergency Alert Guidelines*
- *Queensland Offers of Assistance Guideline*
- *LDMG Responsibilities Manual*
[M.1.030 Local Disaster Management Group \(LDMG\) Responsibilities Manual](#)
- *Prevention preparedness response and recovery disaster management guideline*
[Prevention preparedness response and recovery disaster management guideline | Disaster Management | Queensland Government](#)

Standard

- *Risk Management Standard ISO 31000-2018 Risk management – principles and guidelines*
- *IGEM Standard for Disaster Management*

Key links:

www.igem.qld.gov.au

www.disaster.qld.gov.au

www.qfd.qld.gov.au

www.givit.org.au

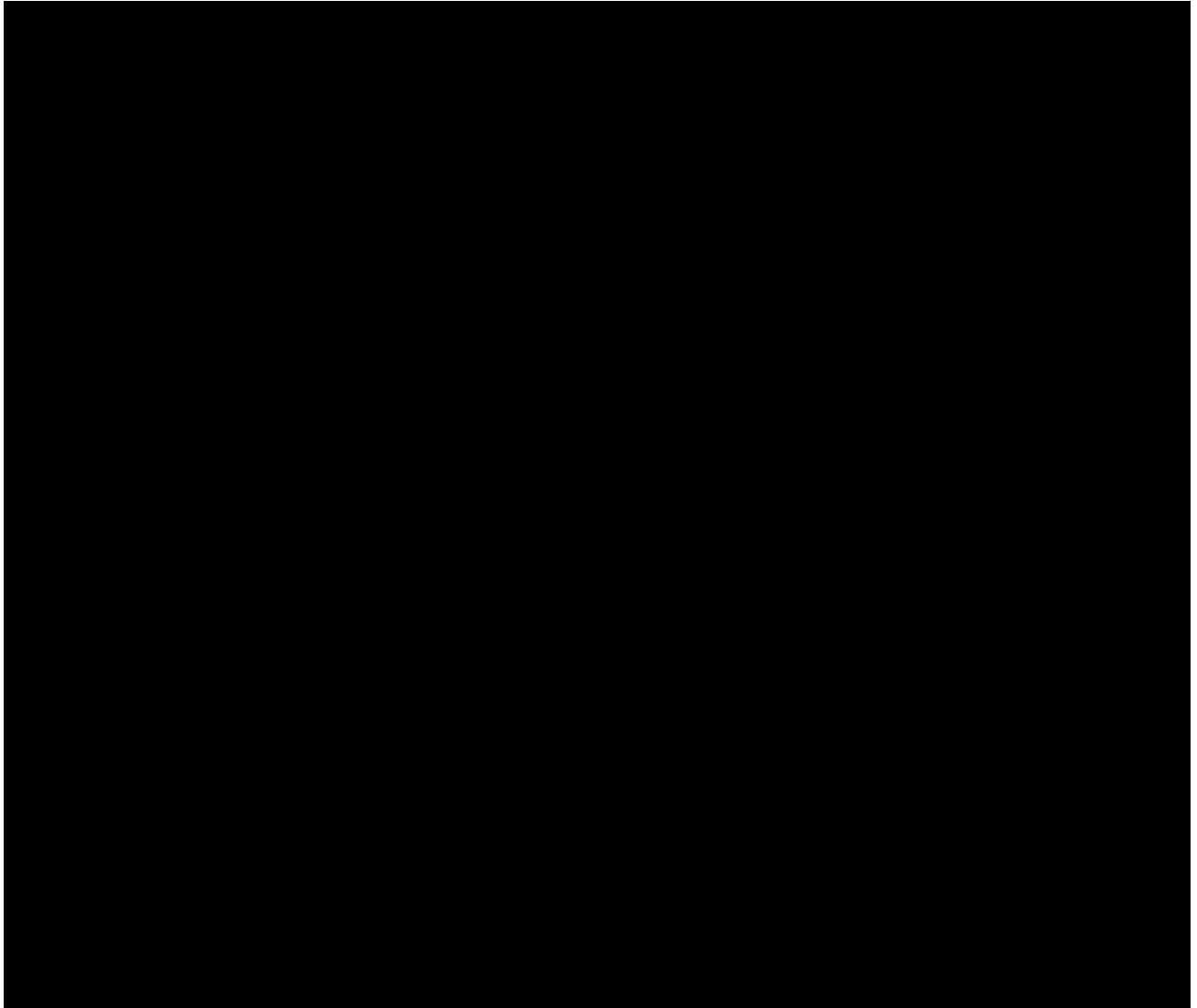
www.volunteeringqld.org.au

www.qra.qld.gov.au

Appendix 11 – Response Organisations (non-public)

<i>Organisation</i>	<i>Emergency</i>	<i>Telephone Number</i>

Appendix 12 – Key Essential Services Information (non-public)

<i>Essential Service Element</i>	<i>Description</i>	<i>Capacity</i>	<i>Local Issues</i>
			

Appendix 13 – Additional Information (non-public)

Public Buildings, Spaces and Events

Blackall-Tambo Regional Council has a number of places where people gather for various activities on a regular basis and others that are used seasonally.

Principle Public Buildings and Places

Building/Place	Frequency of Use	Usual Usage	Peak Gatherings
[Redacted]			

Schools

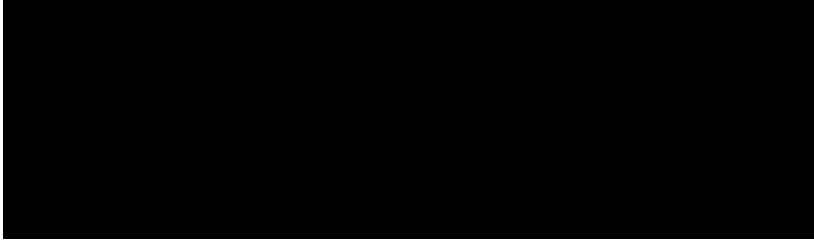
Building/Place	Frequency of Use	Usual Usage	Peak Gatherings
[Redacted]			

Sporting Facilities

Building/Place	Frequency of Use	Usual Usage	Peak Gatherings
[Redacted]			

Significant Tourism

Building/Place	Frequency of Use	Usual Usage	Peak Gatherings
[Redacted]			



End of Document